

## Product datasheet for **TA327183**

### Kallikrein 1 (KLK1) Rabbit Polyclonal Antibody

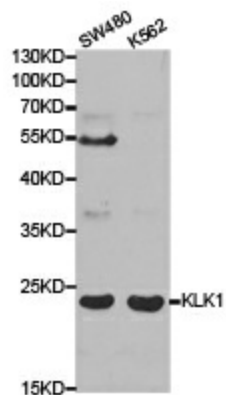
#### Product data:

Product Type:	Primary Antibodies
Applications:	IHC, WB
Recommended Dilution:	WB 1:500 - 1:2000
Reactivity:	Human, Mouse, Rat
Host:	Rabbit
Isotype:	IgG
Clonality:	Polyclonal
Immunogen:	Recombinant protein of human KLK1
Formulation:	Store at -20C or -80C. Avoid freeze / thaw cycles. Buffer: PBS with 0.02% sodium azide, 50% glycerol, pH7.3
Concentration:	lot specific
Purification:	Affinity purification
Conjugation:	Unconjugated
Storage:	Store at -20°C as received.
Stability:	Stable for 12 months from date of receipt.
Gene Name:	kallikrein 1
Database Link:	<a href="#">NP_002248</a> <a href="#">Entrez Gene 16612 Mouse</a> <a href="#">Entrez Gene 24523 Rat</a> <a href="#">Entrez Gene 3816 Human</a> <a href="#">P06870</a>
Background:	Kallikreins are a subgroup of serine proteases having diverse physiological functions. Growing evidence suggests that many kallikreins are implicated in carcinogenesis and some have potential as novel cancer and other disease biomarkers. This gene is one of the fifteen kallikrein subfamily members located in a cluster on chromosome 19. This protein is functionally conserved in its capacity to release the vasoactive peptide, Lys-bradykinin, from low molecular weight kininogen.
Synonyms:	hK1; Klk6; KLKR
Protein Families:	Druggable Genome, Protease



[View online »](#)

## Product images:



Western blot analysis of extracts of various cell lines, using KLK1 antibody.