

Product datasheet for **TA327182S**

GABRA2 Rabbit Polyclonal Antibody

Product data:

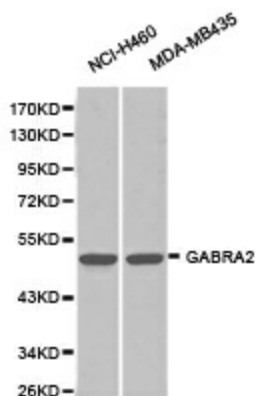
Product Type:	Primary Antibodies
Applications:	IHC, WB
Recommended Dilution:	WB 1:500 - 1:2000
Reactivity:	Human, Mouse
Host:	Rabbit
Isotype:	IgG
Clonality:	Polyclonal
Immunogen:	Recombinant protein of human GABRA2
Formulation:	Store at -20C or -80C. Avoid freeze / thaw cycles. Buffer: PBS with 0.02% sodium azide, 50% glycerol, pH7.3
Concentration:	lot specific
Purification:	Affinity purification
Conjugation:	Unconjugated
Storage:	Store at -20°C as received.
Stability:	Stable for 12 months from date of receipt.
Gene Name:	gamma-aminobutyric acid type A receptor alpha2 subunit
Database Link:	NP_000798 Entrez Gene 14395 Mouse Entrez Gene 2555 Human P47869
Background:	GABA is the major inhibitory neurotransmitter in the mammalian brain where it acts at GABA-A receptors, which are ligand-gated chloride channels. Chloride conductance of these channels can be modulated by agents such as benzodiazepines that bind to the GABA-A receptor. At least 16 distinct subunits of GABA-A receptors have been identified. Alternatively spliced transcript variants encoding the same protein have been found for this gene. [provided by RefSeq, Jul 2008]
Synonyms:	FLJ97076
Protein Families:	Druggable Genome, Ion Channels: Cys-loop Receptors, Transmembrane



[View online »](#)

Protein Pathways: Neuroactive ligand-receptor interaction

Product images:



Western blot analysis of extracts of various cell lines, using GABRA2 antibody.