

Product datasheet for **TA327182**

GABRA2 Rabbit Polyclonal Antibody

Product data:

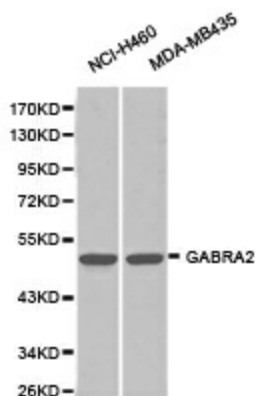
| | |
|-----------------------|---|
| Product Type: | Primary Antibodies |
| Applications: | IHC, WB |
| Recommended Dilution: | WB 1:500 - 1:2000 |
| Reactivity: | Human, Mouse |
| Host: | Rabbit |
| Isotype: | IgG |
| Clonality: | Polyclonal |
| Immunogen: | Recombinant protein of human GABRA2 |
| Formulation: | Store at -20C or -80C. Avoid freeze / thaw cycles. Buffer: PBS with 0.02% sodium azide, 50% glycerol, pH7.3 |
| Concentration: | lot specific |
| Purification: | Affinity purification |
| Conjugation: | Unconjugated |
| Storage: | Store at -20°C as received. |
| Stability: | Stable for 12 months from date of receipt. |
| Gene Name: | gamma-aminobutyric acid type A receptor alpha2 subunit |
| Database Link: | NP_000798 Entrez Gene 14395 Mouse Entrez Gene 2555 Human P47869 |
| Background: | GABA is the major inhibitory neurotransmitter in the mammalian brain where it acts at GABA-A receptors, which are ligand-gated chloride channels. Chloride conductance of these channels can be modulated by agents such as benzodiazepines that bind to the GABA-A receptor. At least 16 distinct subunits of GABA-A receptors have been identified. Alternatively spliced transcript variants encoding the same protein have been found for this gene. [provided by RefSeq, Jul 2008] |
| Synonyms: | FLJ97076 |
| Protein Families: | Druggable Genome, Ion Channels: Cys-loop Receptors, Transmembrane |



[View online »](#)

Protein Pathways: Neuroactive ligand-receptor interaction

Product images:



Western blot analysis of extracts of various cell lines, using GABRA2 antibody.