

## Product datasheet for **TA327181S**

### ALDH1A1 Rabbit Polyclonal Antibody

#### Product data:

Product Type:	Primary Antibodies
Applications:	ICC/IF, IHC, WB
Recommended Dilution:	WB 1:500 - 1:2000;IF 1:50- 1:200
Reactivity:	Human, Mouse, Rat
Host:	Rabbit
Isotype:	IgG
Clonality:	Polyclonal
Immunogen:	Recombinant protein of human ALDH1A1
Formulation:	Store at -20C or -80C. Avoid freeze / thaw cycles. Buffer: PBS with 0.02% sodium azide, 50% glycerol, pH7.3
Concentration:	lot specific
Purification:	Affinity purification
Conjugation:	Unconjugated
Storage:	Store at -20°C as received.
Stability:	Stable for 12 months from date of receipt.
Gene Name:	aldehyde dehydrogenase 1 family member A1
Database Link:	<a href="#">NP_000680</a> <a href="#">Entrez Gene 11668 Mouse</a> <a href="#">Entrez Gene 24188 Rat</a> <a href="#">Entrez Gene 216 Human</a> <a href="#">P00352</a>



[View online »](#)

**Background:**

The aldehyde dehydrogenase family is a large group of enzymes that oxidize aldehydes formed through metabolic processes to their carboxylic acids. ALDH1A1 is a liver cytosolic isoform of acetaldehyde dehydrogenase and is involved in the major pathway of alcohol metabolism along with alcohol dehydrogenase. ALDH1A1 is also known as retinal dehydrogenase 1 and is involved in retinol metabolism, converting retinol to retinoic acid. Recent studies suggest that control of retinoid signaling through ALDH1A1 may influence hematopoietic stem cell differentiation. There has been recent interest in ALDH1 isoforms as predictive biomarkers in disease. Several studies have suggested that ALDH1A1 is a potential marker for cancer stem cells and chemoresistance in several tumor types, such as melanoma, lung cancer, glioblastoma.

**Synonyms:**

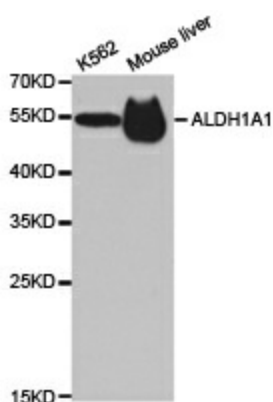
ALDC; ALDH-E1; ALDH1; ALDH11; HEL-9; HEL-S-53e; HEL12; PUMB1; RALDH1

**Protein Families:**

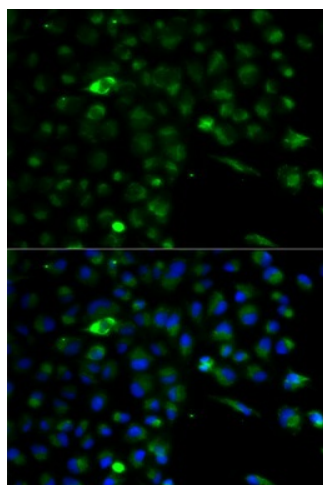
Druggable Genome, ES Cell Differentiation/IPS

**Protein Pathways:**

Metabolic pathways, Retinol metabolism

**Product images:**

Western blot analysis of extracts of various cell lines, using ALDH1A1 antibody.



Immunofluorescence analysis of A549 cell using ALDH1A1 antibody. Blue: DAPI for nuclear staining.