

Product datasheet for **TA327177**

Caspase-6 (CASP6) Rabbit Polyclonal Antibody

Product data:

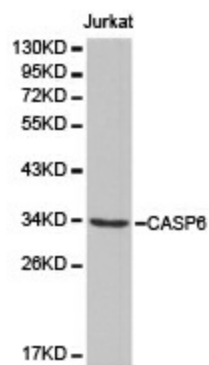
Product Type:	Primary Antibodies
Applications:	WB
Recommended Dilution:	WB: 1:500-1:2000
Reactivity:	Human, Mouse
Host:	Rabbit
Isotype:	IgG
Clonality:	Polyclonal
Immunogen:	Recombinant protein of human CASP6
Formulation:	Store at -20C or -80C. Avoid freeze / thaw cycles. Buffer: PBS with 0.02% sodium azide, 50% glycerol, pH7.3
Concentration:	lot specific
Purification:	Affinity purification
Conjugation:	Unconjugated
Storage:	Store at -20°C as received.
Stability:	Stable for 12 months from date of receipt.
Gene Name:	caspase 6
Database Link:	NP_001217 Entrez Gene 12368 Mouse Entrez Gene 839 Human P55212
Background:	Caspase-6 (Mch2) is one of the major executioner caspases functioning in cellular apoptotic processes. Upon apoptotic stimulation, initiator caspases such as caspase-9 are cleaved and activated. The activated upstream caspases further process downstream executioner caspases, such as caspase-3 and caspase-6, by cleaving them into large and small subunits, thereby initiating a caspase cascade leading to apoptosis. One of the major targets for caspase-6 is the membrane associated protein lamin A. The cleavage of this protein causes cell membrane malfunction, membrane blebbing and eventual cell death.
Synonyms:	MCH2
Protein Families:	Druggable Genome, Protease, Stem cell - Pluripotency



[View online »](#)

Protein Pathways: Apoptosis

Product images:



Western blot analysis of extracts of Jurkat cell lines, using CASP6 antibody.