

## Product datasheet for **TA327174S**

### GGT1 Rabbit Polyclonal Antibody

#### Product data:

Product Type:	Primary Antibodies
Applications:	IHC, WB
Recommended Dilution:	WB: 1:500-1:2000
Reactivity:	Human, Mouse, Rat
Host:	Rabbit
Isotype:	IgG
Clonality:	Polyclonal
Immunogen:	Recombinant protein of human GGT1
Formulation:	Store at -20C or -80C. Avoid freeze / thaw cycles. Buffer: PBS with 0.02% sodium azide, 50% glycerol, pH7.3
Concentration:	lot specific
Purification:	Affinity purification
Conjugation:	Unconjugated
Storage:	Store at -20°C as received.
Stability:	Stable for 12 months from date of receipt.
Gene Name:	gamma-glutamyltransferase 1
Database Link:	<a href="#">NP_005256</a> <a href="#">Entrez Gene 14598 Mouse</a> <a href="#">Entrez Gene 116568 Rat</a> <a href="#">Entrez Gene 2678 Human</a> <a href="#">P19440</a>
Background:	The enzyme encoded by this gene catalyzes the transfer of the glutamyl moiety of glutathione to a variety of amino acids and dipeptide acceptors. The enzyme is composed of a heavy chain and a light chain, which are derived from a single precursor protein, and is present in tissues involved in absorption and secretion. This enzyme is a member of the gamma-glutamyltransferase protein family, of which many members have not yet been fully characterized and some of which may represent pseudogenes. This gene is classified as type I gamma-glutamyltransferase. Multiple alternatively spliced variants, encoding the same protein, have been identified. [provided by RefSeq, Oct 2008]
Synonyms:	CD224; D22S672; D22S732; GGT; GGT 1; GTG

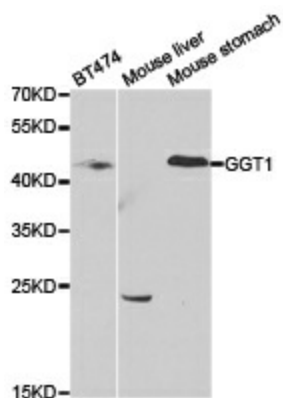


[View online »](#)

**Protein Families:** Protease, Transmembrane

**Protein Pathways:** Arachidonic acid metabolism, Cyanoamino acid metabolism, Glutathione metabolism, Metabolic pathways, Selenoamino acid metabolism, Taurine and hypotaurine metabolism

**Product images:**



Western blot analysis of extracts of various cell lines, using GGT1 antibody.