

Product datasheet for **TA327171S**

IFNAR2 Rabbit Polyclonal Antibody

Product data:

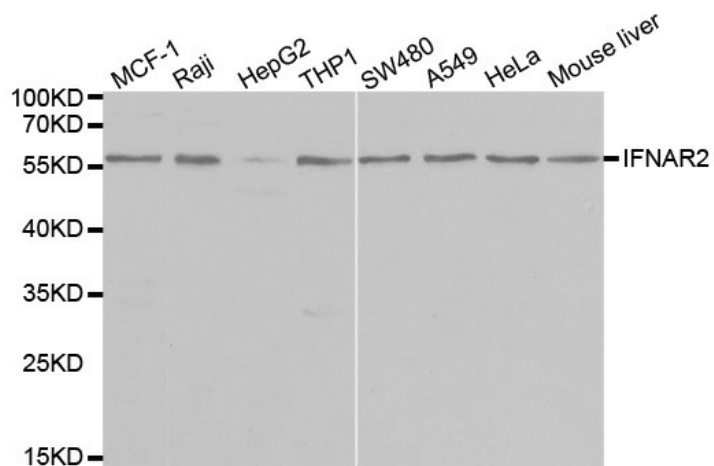
Product Type:	Primary Antibodies
Applications:	ICC/IF, IHC, WB
Recommended Dilution:	WB 1:500 - 1:2000
Reactivity:	Human, Mouse, Rat
Host:	Rabbit
Isotype:	IgG
Clonality:	Polyclonal
Immunogen:	Recombinant protein of human IFNAR2
Formulation:	Store at -20C or -80C. Avoid freeze / thaw cycles. Buffer: PBS with 0.02% sodium azide, 50% glycerol, pH7.3
Concentration:	lot specific
Purification:	Affinity purification
Conjugation:	Unconjugated
Storage:	Store at -20°C as received.
Stability:	Stable for 12 months from date of receipt.
Predicted Protein Size:	58 kDa
Gene Name:	interferon alpha and beta receptor subunit 2
Database Link:	NP_997468 Entrez Gene 3455 Human P48551
Background:	The protein encoded by this gene is a type I membrane protein that forms one of the two chains of a receptor for interferons alpha and beta. Binding and activation of the receptor stimulates Janus protein kinases, which in turn phosphorylate several proteins, including STAT1 and STAT2. Multiple transcript variants encoding at least two different isoforms have been found for this gene.
Synonyms:	IFN-alpha-REC; IFN-R; IFNABR; IFNARB; IMD45
Protein Families:	Druggable Genome, Transmembrane



[View online »](#)

Protein Pathways: Cytokine-cytokine receptor interaction, Jak-STAT signaling pathway, Natural killer cell mediated cytotoxicity, Toll-like receptor signaling pathway

Product images:



Western blot analysis of extracts of various cell lines, using IFNAR2 antibody.