

Product datasheet for **TA327170S**

AIRE Rabbit Polyclonal Antibody

Product data:

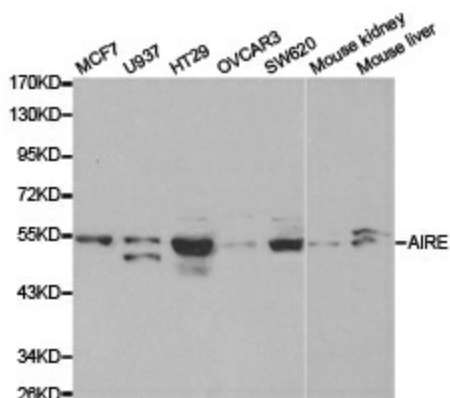
Product Type:	Primary Antibodies
Applications:	ICC/IF, WB
Recommended Dilution:	WB 1:500 - 1:2000;IF 1:50- 1:200
Reactivity:	Human, Mouse, Rat
Host:	Rabbit
Isotype:	IgG
Clonality:	Polyclonal
Immunogen:	A synthetic peptide of human AIRE
Formulation:	Store at -20C or -80C. Avoid freeze / thaw cycles. Buffer: PBS with 0.02% sodium azide, 50% glycerol, pH7.3
Concentration:	lot specific
Purification:	Affinity purification
Conjugation:	Unconjugated
Storage:	Store at -20°C as received.
Stability:	Stable for 12 months from date of receipt.
Gene Name:	autoimmune regulator
Database Link:	NP_000374 Entrez Gene 11634 Mouse Entrez Gene 294328 Rat Entrez Gene 326 Human O43918
Background:	This gene encodes a transcriptional regulator that forms nuclear bodies and interacts with the transcriptional coactivator CREB binding protein. The encoded protein plays an important role in immunity by regulating the expression of autoantigens and negative selection of autoreactive T-cells in the thymus. Mutations in this gene cause the rare autosomal-recessive systemic autoimmune disease termed autoimmune polyendocrinopathy with candidiasis and ectodermal dystrophy (APECED). [provided by RefSeq, Jun 2012]
Synonyms:	AIRE1; APECED; APS1; APSI; PGA1
Protein Families:	Druggable Genome



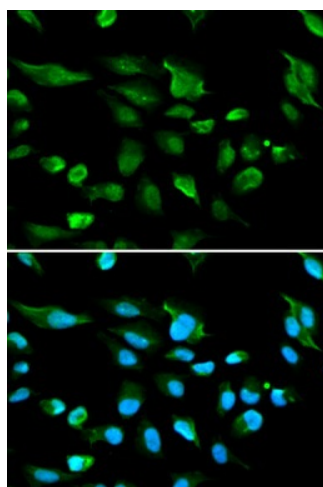
[View online »](#)

Protein Pathways: Primary immunodeficiency, Ubiquitin mediated proteolysis

Product images:



Western blot analysis of extracts of various cell lines, using AIRE antibody.



Immunofluorescence analysis of A549 cell using AIRE antibody. Blue: DAPI for nuclear staining.