

## Product datasheet for **TA327164**

### Fc epsilon RI (FCER1A) Rabbit Polyclonal Antibody

#### Product data:

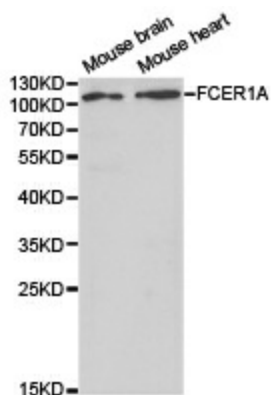
Product Type:	Primary Antibodies
Applications:	WB
Recommended Dilution:	WB: 1:500-1:2000
Reactivity:	Human
Host:	Rabbit
Isotype:	IgG
Clonality:	Polyclonal
Immunogen:	Recombinant protein of human FCER1A
Formulation:	Store at -20C or -80C. Avoid freeze / thaw cycles. Buffer: PBS with 0.02% sodium azide, 50% glycerol, pH7.3
Concentration:	lot specific
Purification:	Affinity purification
Conjugation:	Unconjugated
Storage:	Store at -20°C as received.
Stability:	Stable for 12 months from date of receipt.
Gene Name:	Fc fragment of IgE receptor Ia
Database Link:	<a href="#">NP_001992</a> <a href="#">Entrez Gene 2205 Human P12319</a>
Background:	Fc fragment of IgE, high affinity I, receptor for, alpha polypeptide, also known as high affinity immunoglobulin epsilon receptor subunit alpha, FCER1A and FCE1A, is a single-pass type I membrane protein which contains 2 immunoglobulin-like domains. FCER1A is a subunit of the IgE receptor, which is composed of one glycosylated alpha (FCER1A), one beta (FCER1B), and two gamma (FCER1G) subunits. The high affinity IgE receptor plays a central role in allergic disease, coupling allergen and mast cell to initiate the inflammatory and immediate hypersensitivity responses that are characteristic of disorders such as hay fever and asthma.
Synonyms:	FCE1A; FcERI
Protein Families:	Transmembrane



[View online »](#)

Protein Pathways: Asthma, Fc epsilon RI signaling pathway

### Product images:



Western blot analysis of extracts of mouse spleen cell lines, using FCER1A antibody.