

Product datasheet for **TA327163**

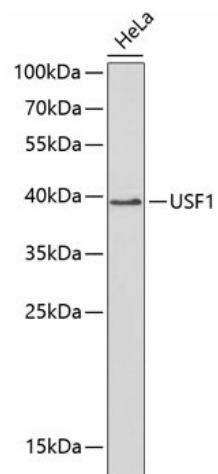
USF1 Rabbit Polyclonal Antibody

Product data:

Product Type:	Primary Antibodies
Applications:	IF, WB
Recommended Dilution:	WB 1:500 - 1:2000
Reactivity:	Human, Mouse, Rat
Host:	Rabbit
Isotype:	IgG
Clonality:	Polyclonal
Immunogen:	Recombinant protein of human USF1
Formulation:	Store at -20C or -80C. Avoid freeze / thaw cycles. Buffer: PBS with 0.02% sodium azide, 50% glycerol, pH7.3
Concentration:	lot specific
Purification:	Affinity purification
Conjugation:	Unconjugated
Storage:	Store at -20°C as received.
Stability:	Stable for 12 months from date of receipt.
Gene Name:	upstream transcription factor 1
Database Link:	NP_009053 Entrez Gene 22278 Mouse Entrez Gene 83586 Rat Entrez Gene 7391 Human P22415
Background:	This gene encodes a member of the basic helix-loop-helix leucine zipper family, and can function as a cellular transcription factor. The encoded protein can activate transcription through pyrimidine-rich initiator (Inr) elements and E-box motifs. This gene has been linked to familial combined hyperlipidemia (FCHL). Two transcript variants encoding distinct isoforms have been identified for this gene. [provided by RefSeq, Jul 2008]
Synonyms:	bHLHb11; FCHL; FCHL1; HYPLIP1; MLTF; MLTFI; UEF
Protein Families:	Druggable Genome, Transcription Factors



[View online »](#)

Product images:

Western blot analysis of extracts of HeLa cells, using USF1 antibody (TA327163) at 1:1000 dilution. | Secondary antibody: HRP Goat Anti-Rabbit IgG (H+L) at 1:10000 dilution. | Lysates/proteins: 25ug per lane. | Blocking buffer: 3% nonfat dry milk in TBST.