

## Product datasheet for **TA327157**

### ARSA Rabbit Polyclonal Antibody

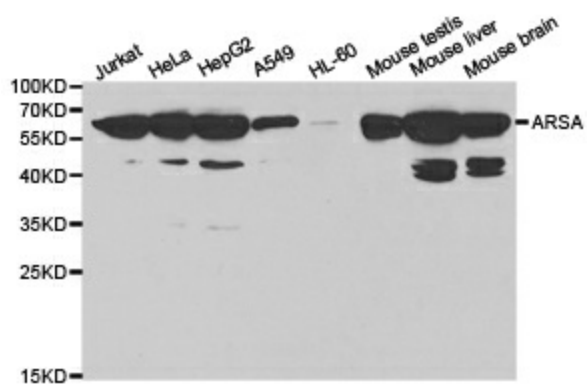
#### Product data:

Product Type:	Primary Antibodies
Applications:	WB
Recommended Dilution:	WB 1:500 - 1:2000
Reactivity:	Human, Mouse
Host:	Rabbit
Isotype:	IgG
Clonality:	Polyclonal
Immunogen:	Recombinant protein of human ARSA
Formulation:	Store at -20C or -80C. Avoid freeze / thaw cycles. Buffer: PBS with 0.02% sodium azide, 50% glycerol, pH7.3
Concentration:	lot specific
Purification:	Affinity purification
Conjugation:	Unconjugated
Storage:	Store at -20°C as received.
Stability:	Stable for 12 months from date of receipt.
Gene Name:	arylsulfatase A
Database Link:	<a href="#">NP_000478</a> <a href="#">Entrez Gene 11883 Mouse</a> <a href="#">Entrez Gene 410 Human</a> <a href="#">P15289</a>
Background:	The protein encoded by this gene hydrolyzes cerebroside sulfate to cerebroside and sulfate. Defects in this gene lead to metachromatic leucodystrophy (MLD), a progressive demyelination disease which results in a variety of neurological symptoms and ultimately death. Alternatively spliced transcript variants have been described for this gene. [provided by RefSeq, Dec 2010]
Synonyms:	MLD
Protein Families:	Druggable Genome
Protein Pathways:	Lysosome, Sphingolipid metabolism



[View online »](#)

## Product images:



Western blot analysis of extracts of various cell lines, using ARSA antibody.