

## Product datasheet for **TA327153S**

### Dopamine Receptor D5 (DRD5) Rabbit Polyclonal Antibody

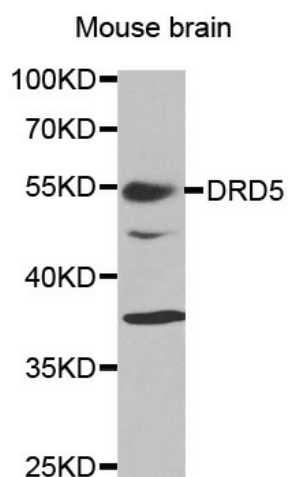
#### Product data:

Product Type:	Primary Antibodies
Applications:	WB
Recommended Dilution:	WB 1:500 - 1:2000
Reactivity:	Human, Mouse
Host:	Rabbit
Isotype:	IgG
Clonality:	Polyclonal
Immunogen:	Recombinant protein of human DRD5
Formulation:	PBS with 0.09% Sodium azide, 50% glycerol, pH7.3.
Concentration:	lot specific
Purification:	Affinity purification
Conjugation:	Unconjugated
Storage:	Store at -20°C as received.
Stability:	Stable for 12 months from date of receipt.
Predicted Protein Size:	53 kDa
Gene Name:	dopamine receptor D5
Database Link:	<a href="#">NP_000789</a> <a href="#">Entrez Gene 13492 Mouse</a> <a href="#">Entrez Gene 1816 Human</a> <a href="#">P21918</a>
Background:	This gene encodes the D5 subtype of the dopamine receptor. The D5 subtype is a G-protein coupled receptor which stimulates adenylyl cyclase. This receptor is expressed in neurons in the limbic regions of the brain. It has a 10-fold higher affinity for dopamine than the D1 subtype. Pseudogenes related to this gene reside on chromosomes 1 and 2.
Synonyms:	DBDR; DRD1B; DRD1L2
Protein Families:	Druggable Genome, GPCR, Transmembrane
Protein Pathways:	Calcium signaling pathway, Neuroactive ligand-receptor interaction



[View online »](#)

## Product images:



Western blot analysis of extracts of mouse brain tissue, using DRD5 antibody.