

## Product datasheet for **TA327150**

### CYP11A1 Rabbit Polyclonal Antibody

#### Product data:

Product Type:	Primary Antibodies
Applications:	ICC/IF, IHC, WB
Recommended Dilution:	WB 1:500 - 1:2000; IF 1:50 - 1:200
Reactivity:	Human, Rat, Mouse
Host:	Rabbit
Isotype:	IgG
Clonality:	Polyclonal
Immunogen:	Recombinant protein of human CYP11A1
Formulation:	Store at -20C or -80C. Avoid freeze / thaw cycles. Buffer: PBS with 0.02% sodium azide, 50% glycerol, pH7.3
Concentration:	lot specific
Purification:	Affinity purification
Conjugation:	Unconjugated
Storage:	Store at -20°C as received.
Stability:	Stable for 12 months from date of receipt.
Predicted Protein Size:	60 kDa
Gene Name:	cytochrome P450 family 11 subfamily A member 1
Database Link:	<a href="#">NP_000772</a> <a href="#">Entrez Gene 13070 Mouse</a> <a href="#">Entrez Gene 29680 Rat</a> <a href="#">Entrez Gene 1583 Human</a> <a href="#">P05108</a>
Background:	The formation of biologically active steroid hormones is significantly influenced by the mitochondrial cytochrome P450 enzyme, cholesterol side-chain cleavage. CYP11A1 functions in catalyzing the first step of steroid biosynthesis under modulation of cAMP. It is also known as cytochrome P450C11A1, cytochrome P450scc and cytochrome P450, subfamily XIA. Expression of CYP11A1 has been a useful tool for monitoring the differentiation state of cells from various endocrine tissues. Identification of CYP11A1 expression by 13363-1-AP detected a ~45kd band in human placenta, with respect to the reported band at 49-52kd by Roby, et al and Durkee, et al.



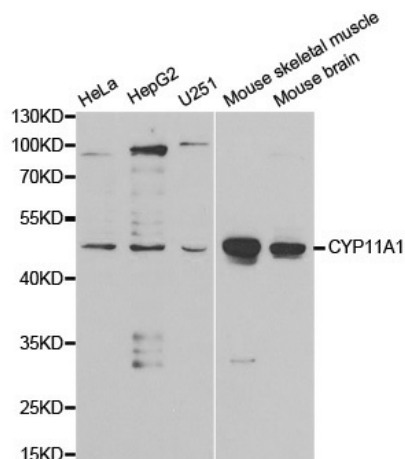
[View online »](#)

**Synonyms:** CYP11A; CYPXIA1; P450SCC

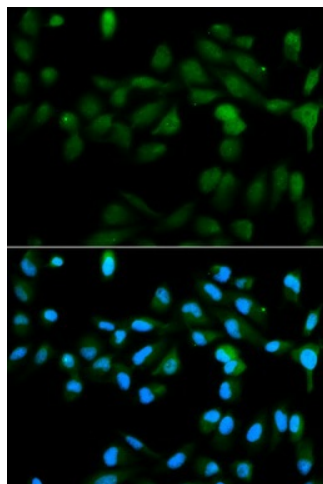
**Protein Families:** Druggable Genome, P450

**Protein Pathways:** C21-Steroid hormone metabolism, Metabolic pathways

### Product images:



Western blot analysis of extracts of various cell lines, using CYP11A1 antibody.



Immunofluorescence analysis of MCF7 cell using CYP11A1 antibody. Blue: DAPI for nuclear staining.