

## Product datasheet for **TA327149S**

### CTBP1 Rabbit Polyclonal Antibody

#### Product data:

Product Type:	Primary Antibodies
Applications:	WB
Recommended Dilution:	WB 1:500 - 1:2000
Reactivity:	Human, Mouse
Host:	Rabbit
Isotype:	IgG
Clonality:	Polyclonal
Immunogen:	Recombinant protein of human CTBP1
Formulation:	Store at -20C or -80C. Avoid freeze / thaw cycles. Buffer: PBS with 0.02% sodium azide, 50% glycerol, pH7.3
Concentration:	lot specific
Purification:	Affinity purification
Conjugation:	Unconjugated
Storage:	Store at -20°C as received.
Stability:	Stable for 12 months from date of receipt.
Gene Name:	C-terminal binding protein 1
Database Link:	<a href="#">NP_001319</a> <a href="#">Entrez Gene 13016 Mouse</a> <a href="#">Entrez Gene 1487 Human</a> <a href="#">Q13363</a>



[View online »](#)

**Background:**

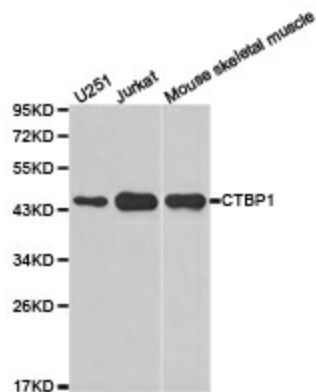
CtBP1 (C-terminal binding protein 1) was first recognized as a cellular factor that interacts with the C-terminal portion of adenovirus E1A, a protein involved in the transcriptional regulation of key cellular genes. CtBP1 is able to regulate gene activity through its intrinsic dehydrogenase activity and by interacting with Polycomb Group (PcG) proteins during development. Along with its homologue, CtBP2, it acts as a transcriptional corepressor of zinc-finger homeodomain factor deltaEF1 to regulate a wide range of cellular processes through transrepression mechanisms. Through its direct interaction with PRDM16, CtBP1 has been shown to be involved in brown adipose tissue differentiation by mediating the repression of white fat genes and directing differentiation toward the brown fat gene program. CtBP1 also plays a role in lipid metabolic pathways and membrane fission by regulating the fission machinery operating Golgi tubular networks. CtBP1 has recently been shown to repress transcription of BRCA1 via a redox regulated mechanism. Furthermore, it is thought that downregulation of BRCA1 and E-cadherin in invasive ductal breast carcinoma correlates directly with activation of CtBP1.

**Synonyms:**

BARS

**Protein Pathways:**

Chronic myeloid leukemia, Notch signaling pathway, Pathways in cancer, Wnt signaling pathway

**Product images:**

Western blot analysis of extracts of various cell lines, using CTBP1 antibody.