

Product datasheet for **TA327145**

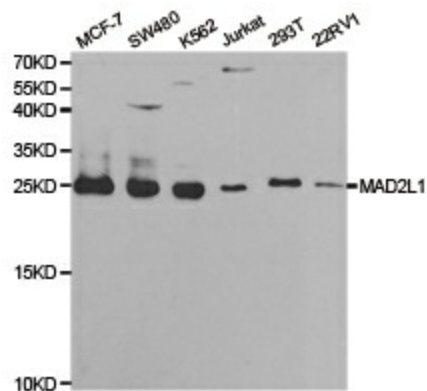
MAD2 (MAD2L1) Rabbit Polyclonal Antibody

Product data:

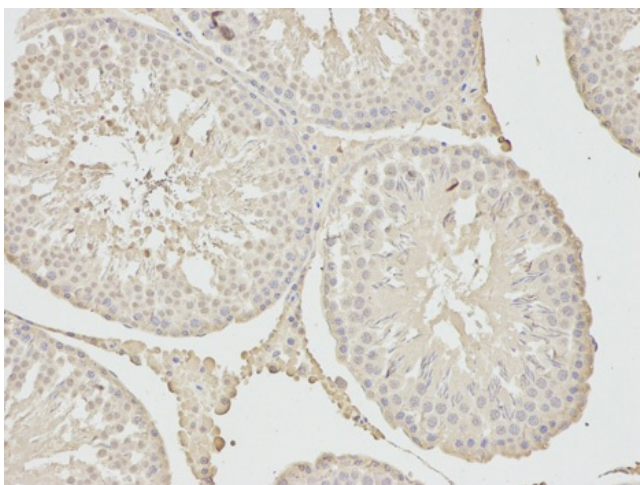
Product Type:	Primary Antibodies
Applications:	IF, IHC, WB
Recommended Dilution:	WB 1:500 - 1:2000;IHC 1:50- 1:200
Reactivity:	Human, Mouse, Rat
Host:	Rabbit
Isotype:	IgG
Clonality:	Polyclonal
Immunogen:	Recombinant protein of human MAD2L1
Formulation:	Store at -20C or -80C. Avoid freeze / thaw cycles. Buffer: PBS with 0.02% sodium azide, 50% glycerol, pH7.3
Concentration:	lot specific
Purification:	Affinity purification
Conjugation:	Unconjugated
Storage:	Store at -20°C as received.
Stability:	Stable for 12 months from date of receipt.
Gene Name:	MAD2 mitotic arrest deficient-like 1 (yeast)
Database Link:	NP_002349 Entrez Gene 56150 Mouse Entrez Gene 297176 Rat Entrez Gene 4085 Human Q13257
Background:	MAD2L1 is a component of the mitotic spindle assembly checkpoint that prevents the onset of anaphase until all chromosomes are properly aligned at the metaphase plate. MAD2L1 is related to the MAD2L2 gene located on chromosome 1. A MAD2 pseudogene has been mapped to chromosome 14.
Synonyms:	HSMAD2; MAD2
Protein Families:	Druggable Genome
Protein Pathways:	Cell cycle, Oocyte meiosis, Progesterone-mediated oocyte maturation



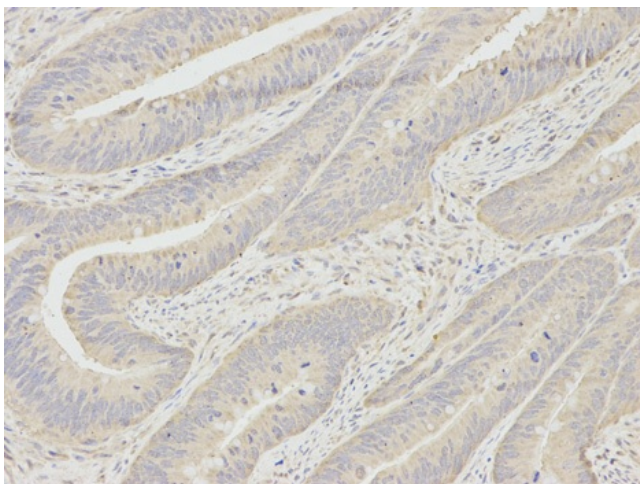
[View online »](#)

Product images:


Western blot analysis of extracts of various cell lines, using MAD2L1 antibody.



Immunohistochemistry of paraffin-embedded human rectal cancer using MAD2L1 antibody at dilution of 1:100 (200x lens).



Immunohistochemistry of paraffin-embedded rat testis using MAD2L1 antibody at dilution of 1:100 (200x lens).