

Product datasheet for **TA327138S**

DNA Polymerase beta (POLB) Rabbit Polyclonal Antibody

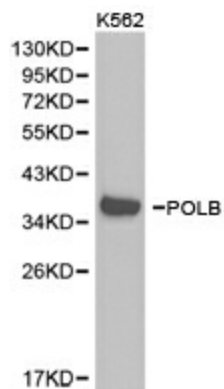
Product data:

Product Type:	Primary Antibodies
Applications:	ICC/IF, IHC, WB
Recommended Dilution:	WB 1:200 - 1:1000;IF 1:50- 1:200
Reactivity:	Human, Mouse
Host:	Rabbit
Isotype:	IgG
Clonality:	Polyclonal
Immunogen:	Recombinant protein of human POLB
Formulation:	Store at -20C or -80C. Avoid freeze / thaw cycles. Buffer: PBS with 0.02% sodium azide, 50% glycerol, pH7.3
Concentration:	lot specific
Purification:	Affinity purification
Conjugation:	Unconjugated
Storage:	Store at -20°C as received.
Stability:	Stable for 12 months from date of receipt.
Gene Name:	polymerase (DNA) beta
Database Link:	NP_002681 Entrez Gene 18970 Mouse Entrez Gene 5423 Human P06746
Background:	The protein encoded by this gene is a DNA polymerase involved in base excision and repair, also called gap-filling DNA synthesis. The encoded protein, acting as a monomer, is normally found in the cytoplasm, but it translocates to the nucleus upon DNA damage. Several transcript variants of this gene exist, but the full-length nature of only one has been described to date. [provided by RefSeq, Sep 2011]
Synonyms:	MGC125976
Protein Families:	Druggable Genome
Protein Pathways:	Base excision repair

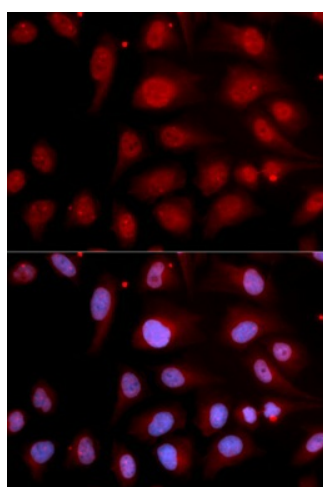


[View online »](#)

Product images:



Western blot analysis of extracts of K562 cell lines, using POLB antibody.



Immunofluorescence analysis of U2OS cell using POLB antibody. Blue: DAPI for nuclear staining.