

## Product datasheet for **TA327132S**

### Kininogen 1 (KNG1) Rabbit Polyclonal Antibody

#### Product data:

Product Type:	Primary Antibodies
Applications:	ELISA, ICC/IF, WB
Recommended Dilution:	WB, 1:500 - 1:1000 IF/ICC, 1:50 - 1:200 ELISA, Recommended starting concentration is 1 µg/mL. Please optimize the concentration based on your specific assay requirements.
Reactivity:	Mouse, Human, Rat
Host:	Rabbit
Isotype:	IgG
Clonality:	Polyclonal
Formulation:	Store at -20C or -80C. Avoid freeze / thaw cycles. Buffer: PBS with 0.02% sodium azide, 50% glycerol, pH7.3
Concentration:	lot specific
Purification:	Affinity purification
Conjugation:	Unconjugated
Storage:	Store at -20°C. Avoid freeze / thaw cycles.
Stability:	Stable for 12 months from date of receipt.
Predicted Protein Size:	72kDa
Gene Name:	kininogen 1
Database Link:	<a href="#">NP_000884</a> <a href="#">Entrez Gene 16644 Mouse</a> <a href="#">Entrez Gene 24903 Rat</a> <a href="#">Entrez Gene 288001 Rat</a> <a href="#">Entrez Gene 3827 Human</a> <a href="#">P01042</a>



[View online »](#)

**Background:**

This gene uses alternative splicing to generate two different proteins- high molecular weight kininogen (HMWK) and low molecular weight kininogen (LMWK). HMWK is essential for blood coagulation and assembly of the kallikrein-kinin system. Also, bradykinin, a peptide causing numerous physiological effects, is released from HMWK. Bradykinin also functions as an antimicrobial peptide with antibacterial and antifungal activity. In contrast to HMWK, LMWK is not involved in blood coagulation. Infection with severe acute respiratory syndrome coronavirus 2 (SARS-CoV-2) reduces or depletes angiotensin converting enzyme 2 (ACE2), which results in an increase in levels of des-Arg(9)-bradykinin, a bioactive metabolite of bradykinin that is associated with lung injury and inflammation. Three transcript variants encoding different isoforms have been found for this gene.

**Synonyms:**

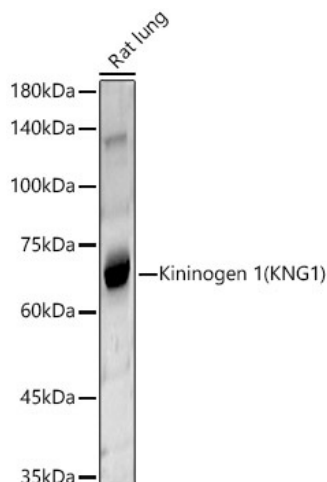
BDK; BK; KNG

**Protein Families:**

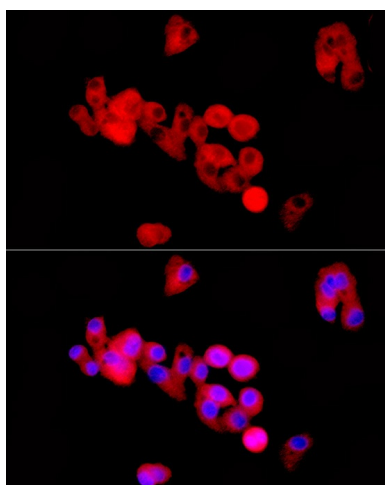
Druggable Genome, Secreted Protein

**Protein Pathways:**

Complement and coagulation cascades

**Product images:**


Western blot analysis of lysates from Rat lung



Immunofluorescence analysis of HepG2 cells using Kininogen 1 (KNG1) Rabbit pAb ([TA327132]) at dilution of 1:50 (40x lens). Secondary antibody: Cy3-conjugated Goat anti-Rabbit IgG (H+L) (AS007) at 1:500 dilution. Blue: DAPI for nuclear staining.