

Product datasheet for **TA327131**

Decorin (DCN) Rabbit Polyclonal Antibody

Product data:

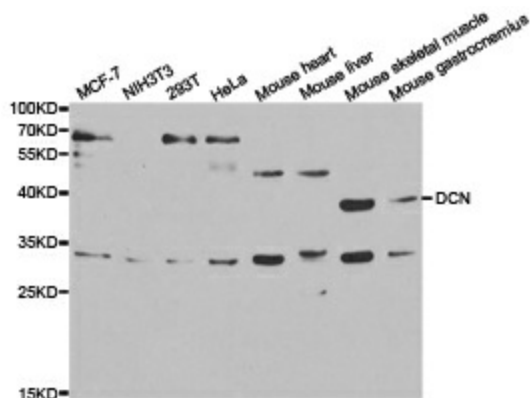
Product Type:	Primary Antibodies
Applications:	ICC/IF, IHC, WB
Recommended Dilution:	WB 1:500 - 1:2000;IF 1:50- 1:200
Reactivity:	Human, Mouse, Rat
Host:	Rabbit
Isotype:	IgG
Clonality:	Polyclonal
Immunogen:	Recombinant protein of human DCN
Formulation:	Store at -20C or -80C. Avoid freeze / thaw cycles. Buffer: PBS with 0.02% sodium azide, 50% glycerol, pH7.3
Concentration:	lot specific
Purification:	Affinity purification
Conjugation:	Unconjugated
Storage:	Store at -20°C as received.
Stability:	Stable for 12 months from date of receipt.
Gene Name:	decorin
Database Link:	NP_001911 Entrez Gene 13179 Mouse Entrez Gene 29139 Rat Entrez Gene 1634 Human P07585
Background:	The protein encoded by this gene is a small cellular or pericellular matrix proteoglycan that is closely related in structure to biglycan protein. The encoded protein and biglycan are thought to be the result of a gene duplication. This protein is a component of connective tissue, binds to type I collagen fibrils, and plays a role in matrix assembly. It contains one attached glycosaminoglycan chain. This protein is capable of suppressing the growth of various tumor cell lines. There are multiple alternatively spliced transcript variants known for this gene. This gene is a candidate gene for Marfan syndrome. [provided by RefSeq]
Synonyms:	CSCD; DSPG2; PG40; PGII; PGS2; SLRR1B
Protein Families:	Druggable Genome, Secreted Protein



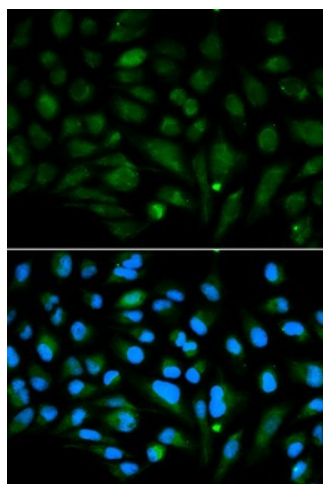
[View online »](#)

Protein Pathways: TGF-beta signaling pathway

Product images:



Western blot analysis of extracts of various cell lines, using DCN antibody.



Immunofluorescence analysis of MCF7 cell using DCN antibody. Blue: DAPI for nuclear staining.