

## Product datasheet for **TA327126**

### PDE4D Rabbit Polyclonal Antibody

#### Product data:

Product Type:	Primary Antibodies
Applications:	IHC, WB
Recommended Dilution:	WB 1:500 - 1:2000
Reactivity:	Human, Mouse, Rat
Host:	Rabbit
Isotype:	IgG
Clonality:	Polyclonal
Immunogen:	Recombinant protein of human PDE4D
Formulation:	Store at -20C or -80C. Avoid freeze / thaw cycles. Buffer: PBS with 0.02% sodium azide, 50% glycerol, pH7.3
Concentration:	lot specific
Purification:	Affinity purification
Conjugation:	Unconjugated
Storage:	Store at -20°C as received.
Stability:	Stable for 12 months from date of receipt.
Predicted Protein Size:	91 kDa
Gene Name:	phosphodiesterase 4D
Database Link:	<a href="#">NP_006194</a> <a href="#">Entrez Gene 24627 Rat</a> <a href="#">Entrez Gene 238871 Mouse</a> <a href="#">Entrez Gene 5144 Human</a> <a href="#">Q08499</a>
Background:	PDE4D(cAMP-specific 3,5-cyclic phosphodiesterase 4D) is also named as DPDE3, PDE43 and belongs to the cyclic nucleotide phosphodiesterase family and PDE4 subfamily. PDE4D subtype may be of particular importance as an antidepressant target in that it is regulated by repeated treatment with both norepinephrine and serotonin reuptake inhibitors as well as by the PDE4 inhibitor rolipram(PMID:16730340). It has at least 9 isoforms and all 9 PDE4D isoforms are expressed in healthy adult human hippocampus and in hippocampus from a patient with advanced Alzheimer disease. This antibody is specific to PDE4D.
Synonyms:	ACRDYS2; DPDE3; HSPDE4D; PDE4DN2; PDE43; STRK1

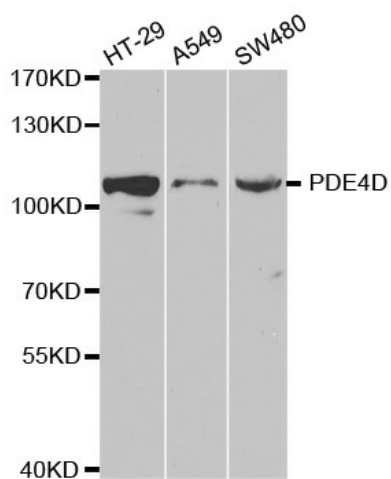


[View online »](#)

Protein Families: Druggable Genome

Protein Pathways: Progesterone-mediated oocyte maturation, Purine metabolism

### Product images:



Western blot analysis of extracts of various cell lines, using PDE4D antibody.