

Product datasheet for **TA327125**

CD46 Rabbit Polyclonal Antibody

Product data:

Product Type:	Primary Antibodies
Applications:	ICC/IF, IHC, WB
Recommended Dilution:	WB 1:500 - 1:2000;IF 1:50- 1:200
Reactivity:	Human, Rat, Mouse
Host:	Rabbit
Isotype:	IgG
Clonality:	Polyclonal
Immunogen:	Recombinant protein of human CD46
Formulation:	Store at -20C or -80C. Avoid freeze / thaw cycles. Buffer: PBS with 0.02% sodium azide, 50% glycerol, pH7.3
Concentration:	lot specific
Purification:	Affinity purification
Conjugation:	Unconjugated
Storage:	Store at -20°C as received.
Stability:	Stable for 12 months from date of receipt.
Gene Name:	CD46 molecule
Database Link:	NP_758860 Entrez Gene 29333 Rat Entrez Gene 4179 Human P15529
Background:	CD46 is a type I membrane protein and a regulatory part of the complement system. This protein has cofactor activity for inactivation of complement components C3b and C4b by serum factor I, which protects the host cell from damage by complement. In addition, CD46 can act as a receptor for the Edmonston strain of measles virus, human herpesvirus-6, and type IV pili of pathogenic Neisseria. Finally, this protein may be involved in the fusion of the spermatozoa with the oocyte during fertilization. CD46 is found in a cluster on chromosome 1q32 with other proteins that are structural components of the complement system.1. Entrez Gene: gene-centered information at NCBI. Nucleic Acids Res. 2005 Jan 1;33:D54-8.
Synonyms:	AHUS2; MCP; MIC10; TLX; TRA2.10

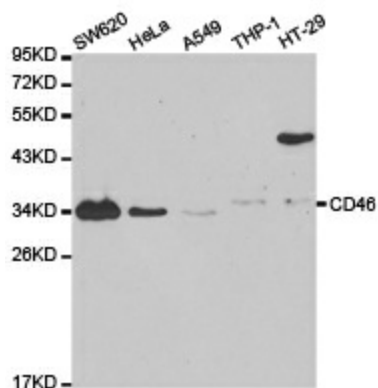


[View online »](#)

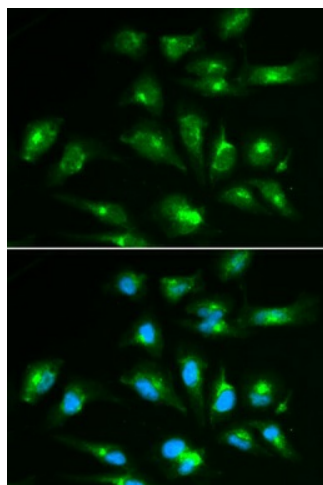
Protein Families: Druggable Genome, Transmembrane

Protein Pathways: Complement and coagulation cascades

Product images:



Western blot analysis of extracts of various cell lines, using CD46 antibody.



Immunofluorescence analysis of HepG2 cell using CD46 antibody. Blue: DAPI for nuclear staining.