

Product datasheet for **TA327123**

SF2 (SRSF1) Rabbit Polyclonal Antibody

Product data:

Product Type:	Primary Antibodies
Applications:	IF, IHC, WB
Recommended Dilution:	WB 1:500 - 1:2000;IHC 1:50- 1:200
Reactivity:	Human, Mouse, Rat
Host:	Rabbit
Isotype:	IgG
Clonality:	Polyclonal
Immunogen:	Recombinant protein of human SFRS1
Formulation:	Store at -20C or -80C. Avoid freeze / thaw cycles. Buffer: PBS with 0.02% sodium azide, 50% glycerol, pH7.3
Concentration:	lot specific
Purification:	Affinity purification
Conjugation:	Unconjugated
Storage:	Store at -20°C as received.
Stability:	Stable for 12 months from date of receipt.
Gene Name:	serine/arginine-rich splicing factor 1
Database Link:	NP_008855 Entrez Gene 110809 Mouse Entrez Gene 689890 Rat Entrez Gene 6426 Human Q07955
Background:	SF2/ASF is a member of the Ser-Arg-rich (SR) protein family of highly conserved nuclear phosphoproteins involved in pre-mRNA splicing. Besides its role in nuclear pre-mRNA splicing, SF2/ASF has been shown to shuttle between the nucleus and cytoplasm, suggesting additional roles in mRNA transport and cytoplasmic events. SF2/ASF associates with translating ribosomes and stimulates translation. It also activates translation initiation by suppressing the activity of 4E-BP1, which is mediated by SF2/ASF association with mTOR and the phosphatase PP2A. More recent studies have demonstrated a role for SF2/ASF in microRNA processing.
Synonyms:	ASF; SF2; SF2p33; SFRS1; SRp30a

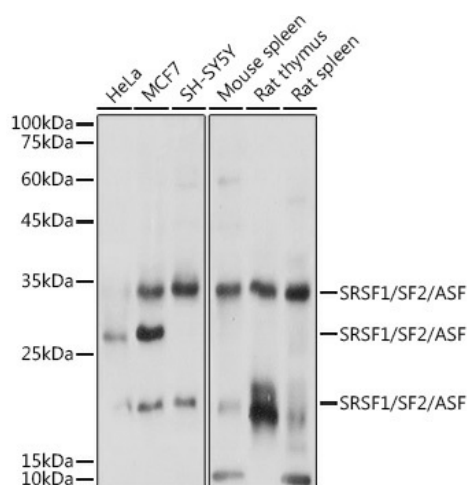


[View online »](#)

Protein Families: Stem cell - Pluripotency

Protein Pathways: Spliceosome

Product images:



Western blot analysis of extracts of various cell lines, using SRSF1/SF2/ASF antibody (TA327123) at 1:1000 dilution. | Secondary antibody: HRP Goat Anti-Rabbit IgG (H+L) at 1:10000 dilution. | Lysates/proteins: 25ug per lane. | Blocking buffer: 3% nonfat dry milk in TBST. | Detection: ECL Basic Kit . | Exposure time: 1s.