

Product datasheet for **TA327122S**

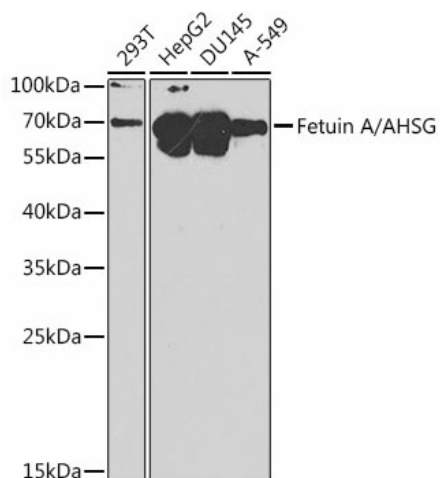
Fetuin A (AHSG) Rabbit Polyclonal Antibody

Product data:

| | |
|-------------------------|---|
| Product Type: | Primary Antibodies |
| Applications: | ELISA, WB |
| Recommended Dilution: | WB, 1:500 - 1:2000 ELISA, Recommended starting concentration is 1 µg/mL. Please optimize the concentration based on your specific assay requirements. |
| Reactivity: | Human |
| Host: | Rabbit |
| Isotype: | IgG |
| Clonality: | Polyclonal |
| Formulation: | Store at -20C or -80C. Avoid freeze / thaw cycles. Buffer: PBS with 0.02% sodium azide, 50% glycerol, pH7.3 |
| Concentration: | lot specific |
| Purification: | Affinity purification |
| Conjugation: | Unconjugated |
| Storage: | Store at -20°C. Avoid freeze / thaw cycles. |
| Stability: | Stable for 12 months from date of receipt. |
| Predicted Protein Size: | 39kDa |
| Gene Name: | alpha 2-HS glycoprotein |
| Database Link: | NP_001613 Entrez Gene 197 Human P02765 |
| Background: | The protein encoded by this gene is a negatively-charged serum glycoprotein that is synthesized by hepatocytes. The encoded protein consists of two polypeptide chains, which are both cleaved from a proprotein encoded from a single mRNA. It is involved in several processes, including endocytosis, brain development, and the formation of bone tissue. Defects in this gene are a cause of susceptibility to leanness. |
| Synonyms: | A2HS; AHS; FETUA; HSGA |
| Protein Families: | Druggable Genome, Secreted Protein |



[View online »](#)

Product images:


Western blot analysis of various lysates using Fetuin A/AHSG Rabbit pAb (TA327122) at 1:1000 dilution.

Secondary antibody: HRP-conjugated Goat anti-Rabbit IgG (H+L) (AS014) at 1:10000 dilution.

Lysates/proteins: 25µg per lane.

Blocking buffer: 3% nonfat dry milk in TBST.