

Product datasheet for **TA327120**

PD-L1 (CD274) Rabbit Polyclonal Antibody

Product data:

Product Type:	Primary Antibodies
Applications:	ICC/IF, IHC, WB
Recommended Dilution:	WB 1:500 - 1:2000;IF 1:20- 1:100
Reactivity:	Human, Mouse, Rat
Host:	Rabbit
Isotype:	IgG
Clonality:	Polyclonal
Immunogen:	Recombinant protein of human CD274
Formulation:	PBS with 0.05% proclin300,50% glycerol,pH7.3.
Concentration:	lot specific
Purification:	Affinity purification
Conjugation:	Unconjugated
Storage:	Store at -20°C as received.
Stability:	Stable for 12 months from date of receipt.
Predicted Protein Size:	33 kDa
Gene Name:	CD274 molecule
Database Link:	NP_054862 Entrez Gene 60533 MouseEntrez Gene 499342 RatEntrez Gene 29126 Human Q9NZQ7

Background: Programmed cell death ligand 1(CD274, or B7-H1, PD-L1), is the first member of B7 family to be discovered. B7 family molecules are type I transmembrane proteins belonging to the immunoglobulin superfamily. In concert with their CD28 family receptors, the B7s are key regulators of the adaptive immune response. CD274 is suggested a negative regulator of T and B cell, and play important role in mediating tolerance of lymphocytes to self-antigens. It also involved in the costimulatory signal, essential for T-cell proliferation and production of IL10 and IFNG, in an IL2-dependent and a PDCD1-independent manner.

Synonyms: B7-H; B7H1; PD-L1; PDCD1L1; PDCD1LG1; PDL1

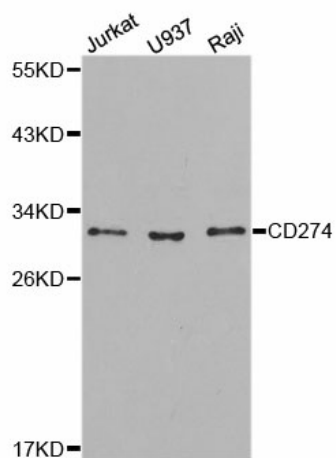


[View online »](#)

Protein Families: Druggable Genome, Transmembrane

Protein Pathways: Cell adhesion molecules (CAMs)

Product images:



Western blot analysis of extracts of various cell lines, using CD274 antibody.