

## Product datasheet for **TA327119S**

### CTNND1 Rabbit Polyclonal Antibody

#### Product data:

|                         |  |
|-------------------------|--|
| Product Type:           | Primary Antibodies   |
| Applications:           | ELISA, IHC, WB   |
| Recommended Dilution:   | WB, 1:500 - 1:2000<br>IHC-P, 1:50 - 1:200<br>ELISA, Recommended starting concentration is 1 µg/mL. Please optimize the concentration based on your specific assay requirements.  |
| Reactivity:             | Human, Mouse, Rat  |
| Host:                   | Rabbit   |
| Isotype:                | IgG  |
| Clonality:              | Polyclonal   |
| Formulation:            | Store at -20C or -80C. Avoid freeze / thaw cycles. Buffer: PBS with 0.02% sodium azide, 50% glycerol, pH7.3  |
| Concentration:          | lot specific   |
| Purification:           | Affinity purification  |
| Conjugation:            | Unconjugated   |
| Storage:                | Store at -20°C. Avoid freeze / thaw cycles.  |
| Stability:              | Stable for 12 months from date of receipt.   |
| Predicted Protein Size: | 108kDa   |
| Gene Name:              | catenin delta 1  |
| Database Link:          | <a href="#">NP_001078927</a><br><a href="#">Entrez Gene 12388 Mouse</a> <a href="#">Entrez Gene 311163 Rat</a> <a href="#">Entrez Gene 1500 Human</a><br><a href="#">O60716</a>  |
| Background:             | This gene encodes a member of the Armadillo protein family, which function in adhesion between cells and signal transduction. Multiple translation initiation codons and alternative splicing result in many different isoforms being translated. Not all of the full-length natures of the described transcript variants have been determined. Read-through transcription also exists between this gene and the neighboring upstream thioredoxin-related transmembrane protein 2 (TMX2) gene. |



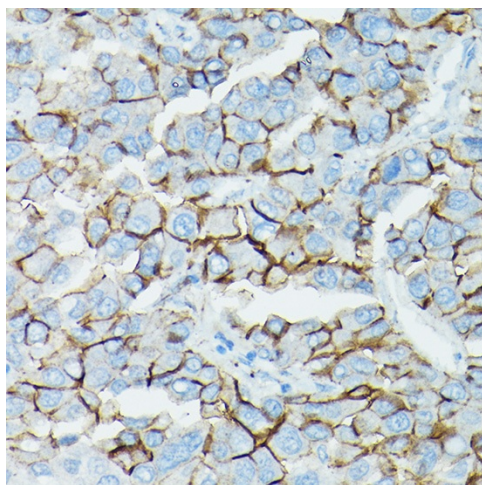
[View online »](#)

**Synonyms:** CAS; CTNND; p120; p120(CAS); p120(CTN); P120CAS; P120CTN

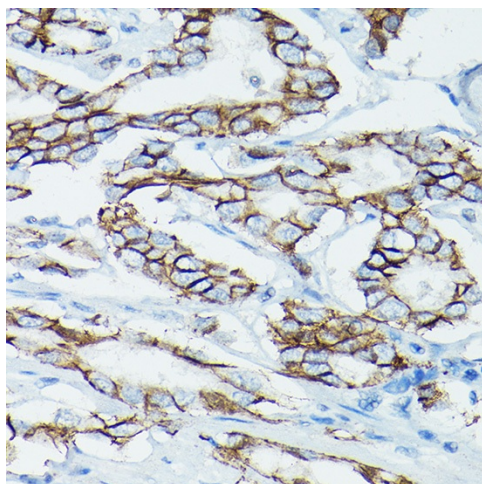
**Protein Families:** Druggable Genome

**Protein Pathways:** Adherens junction, Leukocyte transendothelial migration

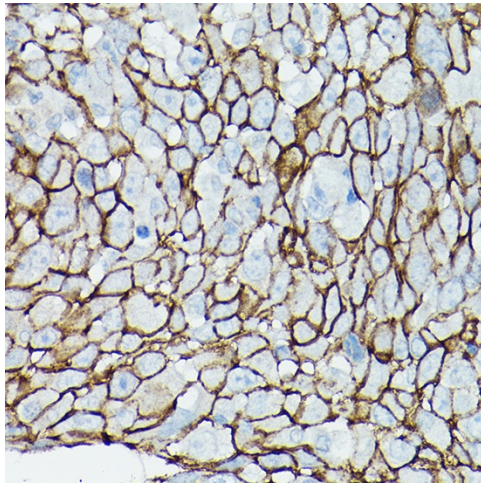
**Product images:**



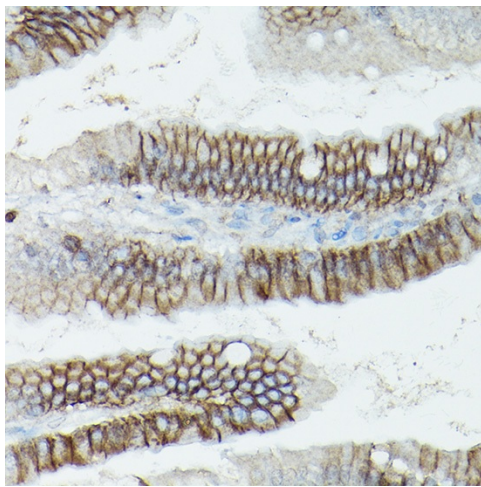
Western blot analysis of lysates from HT-29 cells



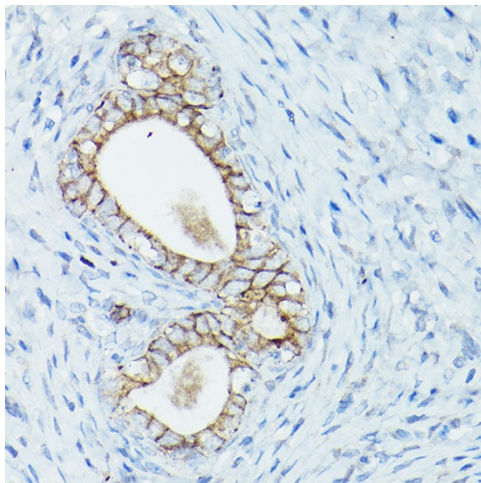
Immunohistochemistry analysis of paraffin-embedded Human liver cancer using  $\delta$ -Catenin/p120 Catenin Rabbit pAb ([TA327119]) at dilution of 1:50 (40x lens). High pressure antigen retrieval performed with 0.01M Citrate Buffer (pH 6.0) prior to IHC staining.



Immunohistochemistry analysis of paraffin-embedded Human prostate cancer using  $\delta$ -Catenin/p120 Catenin Rabbit pAb ([TA327119]) at dilution of 1:50 (40x lens). High pressure antigen retrieval performed with 0.01M Citrate Bufferr (pH 6.0) prior to IHC staining.



Immunohistochemistry analysis of paraffin-embedded Human urothelial carcinoma using  $\delta$ -Catenin/p120 Catenin Rabbit pAb ([TA327119]) at dilution of 1:50 (40x lens). High pressure antigen retrieval performed with 0.01M Citrate Bufferr (pH 6.0) prior to IHC staining.



Immunohistochemistry analysis of paraffin-embedded Mouse colon using  $\delta$ -Catenin/p120 Catenin Rabbit pAb ([TA327119]) at dilution of 1:50 (40x lens). High pressure antigen retrieval performed with 0.01M Citrate Bufferr (pH 6.0) prior to IHC staining.