

Product datasheet for **TA327118**

Cathelicidin (CAMP) Rabbit Polyclonal Antibody

Product data:

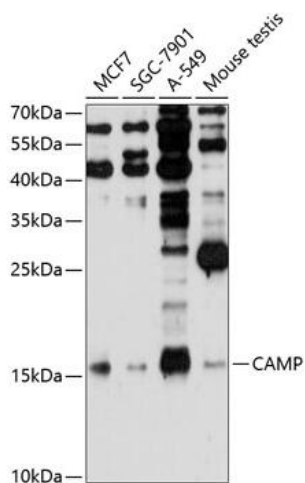
Product Type:	Primary Antibodies
Applications:	IHC, WB
Recommended Dilution:	WB 1:500 - 1:2000
Reactivity:	Human, Mouse
Host:	Rabbit
Isotype:	IgG
Clonality:	Polyclonal
Immunogen:	Recombinant protein of human CAMP
Formulation:	Store at -20C or -80C. Avoid freeze / thaw cycles. Buffer: PBS with 0.02% sodium azide, 50% glycerol, pH7.3
Concentration:	lot specific
Purification:	Affinity purification
Conjugation:	Unconjugated
Storage:	Store at -20°C as received.
Stability:	Stable for 12 months from date of receipt.
Predicted Protein Size:	19 kDa
Gene Name:	cathelicidin antimicrobial peptide
Database Link:	NP_004336 Entrez Gene 12796 Mouse Entrez Gene 820 Human P49913
Background:	This gene encodes a member of an antimicrobial peptide family, characterized by a highly conserved N-terminal signal peptide containing a cathelin domain and a structurally variable cationic antimicrobial peptide, which is produced by extracellular proteolysis from the C-terminus. The encoded protein has several functions in addition to antimicrobial activity, including cell chemotaxis, immune mediator induction and inflammatory response regulation.
Synonyms:	CAP-18; CAP18; CRAMP; FALL-39; FALL39; HSD26; LL37



[View online »](#)

Protein Families: Secreted Protein, Transmembrane

Product images:



Western blot analysis of extracts of various cell lines, using CAMP Antibody at 1:1000 dilution. Secondary antibody: HRP Goat Anti-Rabbit IgG (H+L) at 1:10000 dilution. Lysates/proteins: 25ug per lane. Blocking buffer: 3% nonfat dry milk in TBST. Detection: ECL Basic Kit. Exposure time: 60s.