

## Product datasheet for **TA327116S**

### CYBB Rabbit Polyclonal Antibody

#### Product data:

|                         |   |
|-------------------------|---|
| Product Type:           | Primary Antibodies  |
| Applications:           | ICC/IF, IHC, WB   |
| Recommended Dilution:   | WB 1:500 - 1:2000   |
| Reactivity:             | Human, Mouse, Rat   |
| Host:                   | Rabbit  |
| Isotype:                | IgG   |
| Clonality:              | Polyclonal  |
| Immunogen:              | Recombinant protein of human CYBB   |
| Formulation:            | Store at -20C or -80C. Avoid freeze / thaw cycles. Buffer: PBS with 0.02% sodium azide, 50% glycerol, pH7.3   |
| Concentration:          | lot specific  |
| Purification:           | Affinity purification   |
| Conjugation:            | Unconjugated  |
| Storage:                | Store at -20°C as received.   |
| Stability:              | Stable for 12 months from date of receipt.  |
| Predicted Protein Size: | 65 kDa  |
| Gene Name:              | cytochrome b-245 beta chain   |
| Database Link:          | <a href="#">NP_000388</a><br><a href="#">Entrez Gene 13058 Mouse</a> <a href="#">Entrez Gene 66021 Rat</a> <a href="#">Entrez Gene 1536 Human</a><br><a href="#">P04839</a>   |
| Background:             | Cytochrome b (-245) is composed of cytochrome b alpha (CYBA) and beta (CYBB) chain. It has been proposed as a primary component of the microbicidal oxidase system of phagocytes. CYBB deficiency is one of five described biochemical defects associated with chronic granulomatous disease (CGD). In this disorder, there is decreased activity of phagocyte NADPH oxidase; neutrophils are able to phagocytize bacteria but cannot kill them in the phagocytic vacuoles. The cause of the killing defect is an inability to increase the cells respiration and consequent failure to deliver activated oxygen into the phagocytic vacuole. |
| Synonyms:               | AMCBX2; CGD; GP91-1; GP91-PHOX; GP91PHOX; IMD34; NOX2; p91-PHOX   |

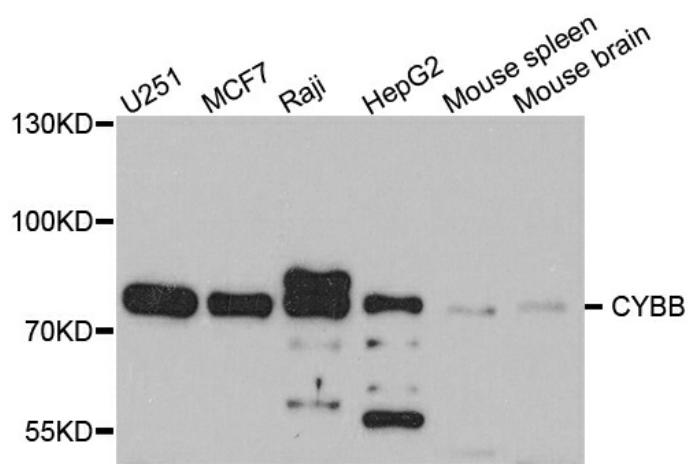


[View online »](#)

Protein Families: Druggable Genome, Ion Channels: Other, Transmembrane

Protein Pathways: Leukocyte transendothelial migration

### Product images:



Western blot analysis of extracts of various cell lines, using CYBB antibody.