

Product datasheet for **TA327116**

CYBB Rabbit Polyclonal Antibody

Product data:

Product Type:	Primary Antibodies
Applications:	ICC/IF, IHC, WB
Recommended Dilution:	WB 1:500 - 1:2000
Reactivity:	Human, Mouse, Rat
Host:	Rabbit
Isotype:	IgG
Clonality:	Polyclonal
Immunogen:	Recombinant protein of human CYBB
Formulation:	Store at -20C or -80C. Avoid freeze / thaw cycles. Buffer: PBS with 0.02% sodium azide, 50% glycerol, pH7.3
Concentration:	lot specific
Purification:	Affinity purification
Conjugation:	Unconjugated
Storage:	Store at -20°C as received.
Stability:	Stable for 12 months from date of receipt.
Predicted Protein Size:	65 kDa
Gene Name:	cytochrome b-245 beta chain
Database Link:	NP_000388 Entrez Gene 13058 Mouse Entrez Gene 66021 Rat Entrez Gene 1536 Human P04839
Background:	Cytochrome b (-245) is composed of cytochrome b alpha (CYBA) and beta (CYBB) chain. It has been proposed as a primary component of the microbicidal oxidase system of phagocytes. CYBB deficiency is one of five described biochemical defects associated with chronic granulomatous disease (CGD). In this disorder, there is decreased activity of phagocyte NADPH oxidase; neutrophils are able to phagocytize bacteria but cannot kill them in the phagocytic vacuoles. The cause of the killing defect is an inability to increase the cells respiration and consequent failure to deliver activated oxygen into the phagocytic vacuole.
Synonyms:	AMCBX2; CGD; GP91-1; GP91-PHOX; GP91PHOX; IMD34; NOX2; p91-PHOX

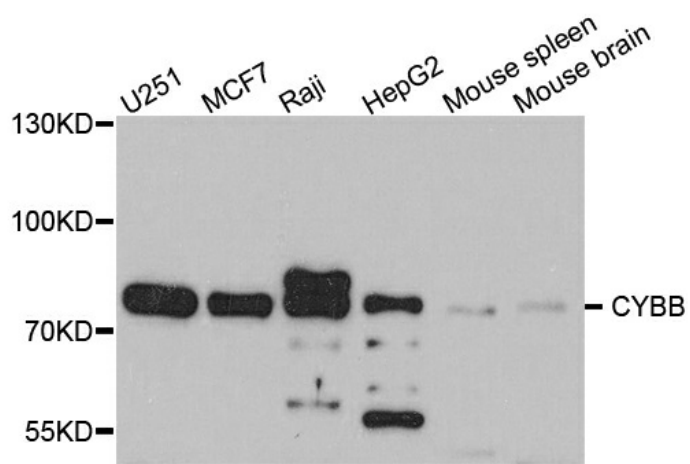


[View online »](#)

Protein Families: Druggable Genome, Ion Channels: Other, Transmembrane

Protein Pathways: Leukocyte transendothelial migration

Product images:



Western blot analysis of extracts of various cell lines, using CYBB antibody.