

## Product datasheet for **TA327113**

### IDE Rabbit Polyclonal Antibody

#### Product data:

Product Type:	Primary Antibodies
Applications:	ICC/IF, WB
Recommended Dilution:	WB 1:500 - 1:2000;IF 1:10 - 1:100
Reactivity:	Human, Mouse
Host:	Rabbit
Isotype:	IgG
Clonality:	Polyclonal
Immunogen:	Recombinant protein of human IDE
Formulation:	Store at -20C or -80C. Avoid freeze / thaw cycles. Buffer: PBS with 0.02% sodium azide, 50% glycerol, pH7.3
Concentration:	lot specific
Purification:	Affinity purification
Conjugation:	Unconjugated
Storage:	Store at -20°C as received.
Stability:	Stable for 12 months from date of receipt.
Predicted Protein Size:	118 kDa
Gene Name:	insulin degrading enzyme
Database Link:	<a href="#">NP_004960</a> <a href="#">Entrez Gene 15925 Mouse</a> <a href="#">Entrez Gene 3416 Human</a> <a href="#">P14735</a>



[View online »](#)

**Background:**

This gene encodes a zinc metallopeptidase that degrades intracellular insulin, and thereby terminates insulins activity, as well as participating in intercellular peptide signalling by degrading diverse peptides such as glucagon, amylin, bradykinin, and kallidin. The preferential affinity of this enzyme for insulin results in insulin-mediated inhibition of the degradation of other peptides such as beta-amyloid. Deficiencies in this proteins function are associated with Alzheimers disease and type 2 diabetes mellitus but mutations in this gene have not been shown to be causitive for these diseases. This protein localizes primarily to the cytoplasm but in some cell types localizes to the extracellular space, cell membrane, peroxisome, and mitochondrion. Alternative splicing results in multiple transcript variants encoding distinct isoforms. Additional transcript variants have been described but have not been experimentally verified. [provided by RefSeq, Sep 2009]

**Synonyms:**

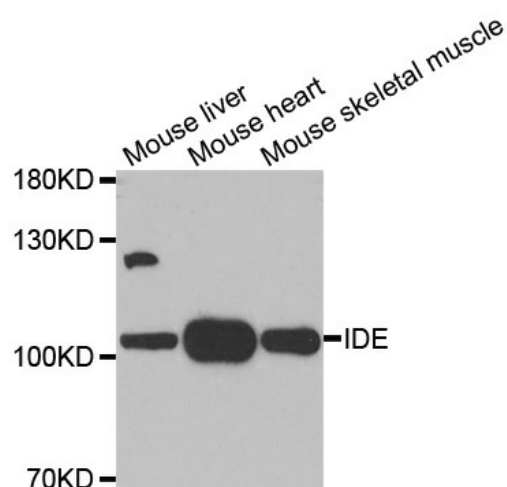
INSULYSIN

**Protein Families:**

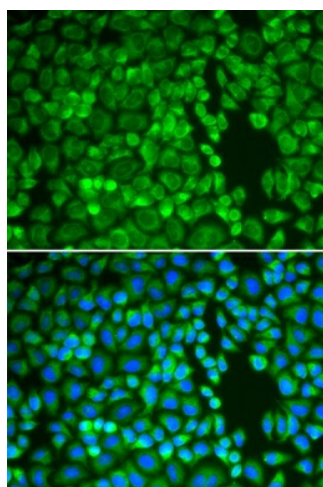
Druggable Genome, Protease

**Protein Pathways:**

Alzheimer's disease

**Product images:**

Western blot analysis of extracts of various tissues, using IDE antibody.



Immunofluorescence analysis of A549 cell using IDE antibody. Blue: DAPI for nuclear staining.