

## Product datasheet for **TA327111**

### XPA Rabbit Polyclonal Antibody

#### Product data:

Product Type:	Primary Antibodies
Applications:	IF, IHC, WB
Recommended Dilution:	WB 1:500 - 1:2000;IHC 1:50 - 1:200
Reactivity:	Human, Mouse, Rat
Host:	Rabbit
Isotype:	IgG
Clonality:	Polyclonal
Immunogen:	Recombinant protein of human XPA
Formulation:	Store at -20C or -80C. Avoid freeze / thaw cycles. Buffer: PBS with 0.02% sodium azide, 50% glycerol, pH7.3
Concentration:	lot specific
Purification:	Affinity purification
Conjugation:	Unconjugated
Storage:	Store at -20°C as received.
Stability:	Stable for 12 months from date of receipt.
Predicted Protein Size:	31 kDa
Gene Name:	XPA, DNA damage recognition and repair factor
Database Link:	<a href="#">NP_000371</a> <a href="#">Entrez Gene 22590 MouseEntrez Gene 298074 RatEntrez Gene 7507 Human P23025</a>
Background:	This gene encodes a zinc finger protein involved in DNA excision repair. The encoded protein is part of the NER (nucleotide excision repair) complex which is responsible for repair of UV radiation-induced photoproducts and DNA adducts induced by chemical carcinogens. Mutations in this gene are associated with xeroderma pigmentosum complementation group A. Alternatively spliced transcript variants have been found for this gene. [provided by RefSeq, Mar 2009]
Synonyms:	XP1; XPAC

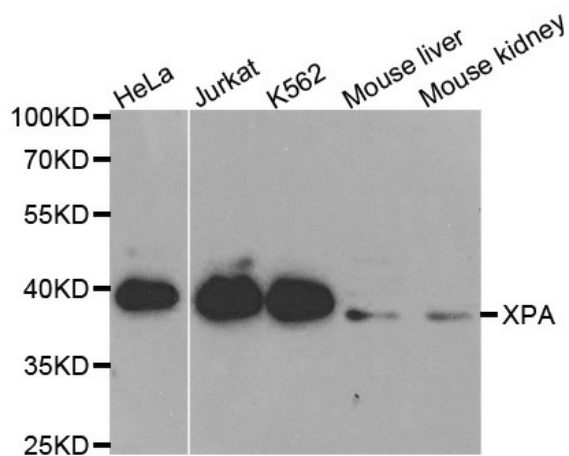


[View online »](#)

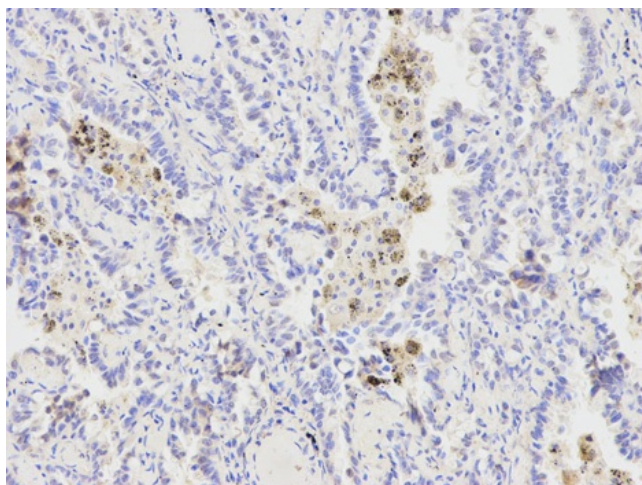
Protein Families: Druggable Genome

Protein Pathways: Nucleotide excision repair

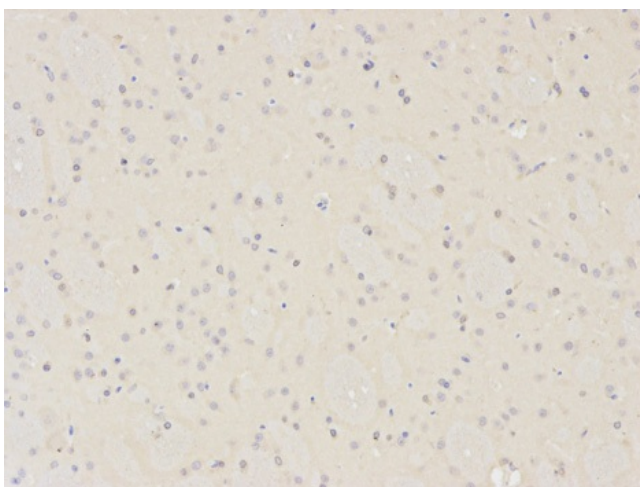
### Product images:



Western blot analysis of extracts of various cell lines, using XPA antibody.



Immunohistochemistry of paraffin-embedded human lung cancer using XPA antibody at dilution of 1:200 (200x lens).



Immunohistochemistry of paraffin-embedded rat brain using XPA antibody at dilution of 1:200 (200x lens).