

## Product datasheet for **TA327110**

### RFC1 Rabbit Polyclonal Antibody

#### Product data:

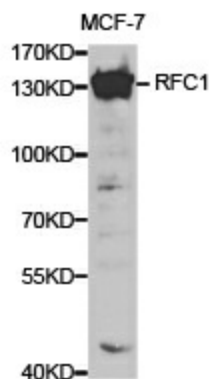
Product Type:	Primary Antibodies
Applications:	ICC/IF, WB
Recommended Dilution:	WB 1:500 - 1:2000;IF 1:50- 1:200
Reactivity:	Human, Mouse, Rat
Host:	Rabbit
Isotype:	IgG
Clonality:	Polyclonal
Immunogen:	Recombinant protein of human RFC1
Formulation:	Store at -20C or -80C. Avoid freeze / thaw cycles. Buffer: PBS with 0.02% sodium azide, 50% glycerol, pH7.3
Concentration:	lot specific
Purification:	Affinity purification
Conjugation:	Unconjugated
Storage:	Store at -20°C as received.
Stability:	Stable for 12 months from date of receipt.
Gene Name:	replication factor C subunit 1
Database Link:	<a href="#">NP_002904</a> <a href="#">Entrez Gene 19687 Mouse</a> <a href="#">Entrez Gene 89809 Rat</a> <a href="#">Entrez Gene 5981 Human</a> <a href="#">P35251</a>
Background:	This gene encodes the large subunit of replication factor C, a five subunit DNA polymerase accessory protein, which is a DNA-dependent ATPase required for eukaryotic DNA replication and repair. The large subunit acts as an activator of DNA polymerases, binds to the 3' end of primers, and promotes coordinated synthesis of both strands. It may also have a role in telomere stability. Alternatively spliced transcript variants encoding different isoforms have been noted for this gene. [provided by RefSeq, Mar 2011]
Synonyms:	A1; MHCBBF; PO-GA; RECC1; RFC; RFC140
Protein Families:	Transcription Factors



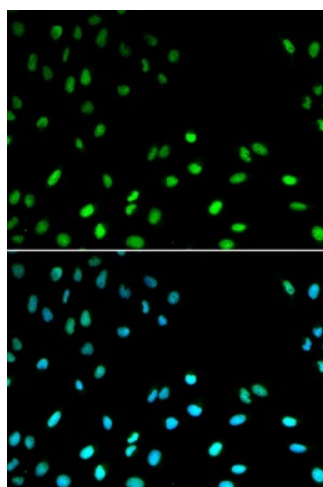
[View online »](#)

Protein Pathways: DNA replication, Mismatch repair, Nucleotide excision repair

### Product images:



Western blot analysis of extracts of MCF-7 cell lines, using RFC1 antibody.



Immunofluorescence analysis of MCF7 cell using RFC1 antibody. Blue: DAPI for nuclear staining.