

Product datasheet for **TA327108**

CD62L (SELL) Rabbit Polyclonal Antibody

Product data:

Product Type:	Primary Antibodies
Applications:	IHC, WB
Recommended Dilution:	WB: 1:500-1:2000
Reactivity:	Human, Mouse, Rat
Host:	Rabbit
Isotype:	IgG
Clonality:	Polyclonal
Immunogen:	Recombinant protein of human SELL
Formulation:	Store at -20C or -80C. Avoid freeze / thaw cycles. Buffer: PBS with 0.02% sodium azide, 50% glycerol, pH7.3
Concentration:	lot specific
Purification:	Affinity purification
Conjugation:	Unconjugated
Storage:	Store at -20°C as received.
Stability:	Stable for 12 months from date of receipt.
Gene Name:	selectin L
Database Link:	NP_000646

[Entrez Gene 20343 Mouse](#)[Entrez Gene 29259 Rat](#)[Entrez Gene 6402 Human](#)
[P14151](#)

Background: This gene encodes a cell surface adhesion molecule that belongs to a family of adhesion/homing receptors. The encoded protein contains a C-type lectin-like domain, a calcium-binding epidermal growth factor-like domain, and two short complement-like repeats. The gene product is required for binding and subsequent rolling of leucocytes on endothelial cells, facilitating their migration into secondary lymphoid organs and inflammation sites. Single-nucleotide polymorphisms in this gene have been associated with various diseases including immunoglobulin A nephropathy. Alternatively spliced transcript variants have been found for this gene. [provided by RefSeq, Oct 2009]

Synonyms: CD62L; LAM1; LECAM1; LEU8; LNHR; LSEL; LYAM1; PLNHR; TQ1

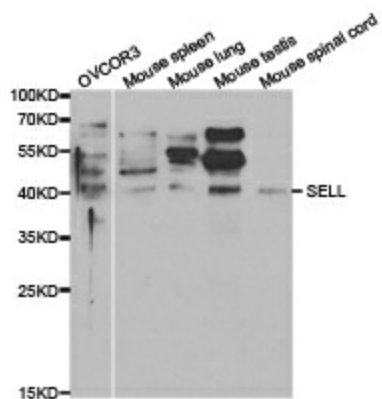


[View online »](#)

Protein Families: Druggable Genome, ES Cell Differentiation/IPS, Transmembrane

Protein Pathways: Cell adhesion molecules (CAMs)

Product images:



Western blot analysis of extracts of various cell lines, using SELL antibody.