

Product datasheet for **TA327103**

CSNK2A2 Rabbit Polyclonal Antibody

Product data:

Product Type:	Primary Antibodies
Applications:	ICC/IF, WB
Recommended Dilution:	WB 1:500 - 1:2000;IF 1:50 - 1:200
Reactivity:	Human, Mouse, Rat
Host:	Rabbit
Isotype:	IgG
Clonality:	Polyclonal
Immunogen:	Recombinant protein of human CSNK2A2
Formulation:	Store at -20C or -80C. Avoid freeze / thaw cycles. Buffer: PBS with 0.02% sodium azide, 50% glycerol, pH7.3
Concentration:	lot specific
Purification:	Affinity purification
Conjugation:	Unconjugated
Storage:	Store at -20°C as received.
Stability:	Stable for 12 months from date of receipt.
Predicted Protein Size:	41 kDa
Gene Name:	casein kinase 2 alpha 2
Database Link:	NP_001887 Entrez Gene 13000 MouseEntrez Gene 307641 RatEntrez Gene 1459 Human P19784



[View online »](#)

Background:

Casein kinase I (also designated CKI) and casein kinase II (CKII) compose a family of serine/threonine protein kinases which are present in all eukaryotes examined to date. Casein kinase I family members, which include casein kinase I α , I β , I δ and I ϵ , have been implicated in the control of cytoplasmic and nuclear processes, including DNA replication and repair. CKII is usually expressed as a tetrameric complex consisting of either an $\alpha_2\beta_2$ or an $\alpha\beta$ structure. The α catalytic subunit is stimulated by the β regulatory subunit, which undergoes autophosphorylation. Casein kinase II activity is high in the cytosol and nucleus of proliferating and differentiating cells. Casein kinase II is known to phosphorylate more than 100 different substrates including nuclear oncoproteins, transcription factors and enzymes involved in DNA metabolism.

Synonyms:

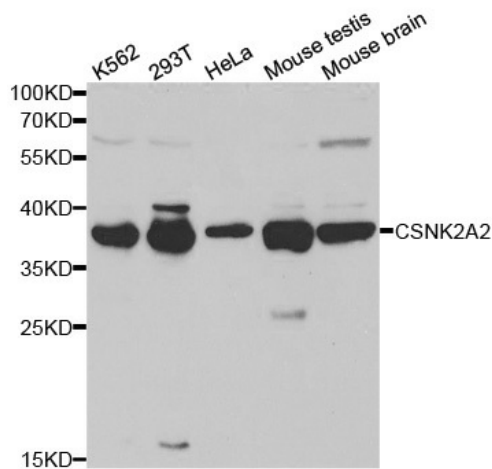
CK2A2; CK2alpha; CK2alpha'; CSNK2A1

Protein Families:

Druggable Genome, Protein Kinase

Protein Pathways:

Adherens junction, Tight junction, Wnt signaling pathway

Product images:

Western blot analysis of extracts of various cell lines, using CSNK2A2 antibody.