

Product datasheet for **TA327102**

SPARC Rabbit Polyclonal Antibody

Product data:

Product Type:	Primary Antibodies
Applications:	IHC, WB
Recommended Dilution:	WB 1:500 - 1:2000;IHC 1:50 - 1:200
Reactivity:	Human, Mouse, Rat
Host:	Rabbit
Isotype:	IgG
Clonality:	Polyclonal
Immunogen:	Recombinant protein of human SPARC
Formulation:	Store at -20C or -80C. Avoid freeze / thaw cycles. Buffer: PBS with 0.02% sodium azide, 50% glycerol, pH7.3
Concentration:	lot specific
Purification:	Affinity purification
Conjugation:	Unconjugated
Storage:	Store at -20°C as received.
Stability:	Stable for 12 months from date of receipt.
Predicted Protein Size:	35 kDa
Gene Name:	secreted protein acidic and cysteine rich
Database Link:	NP_003109 Entrez Gene 20692 MouseEntrez Gene 24791 RatEntrez Gene 6678 Human P09486



[View online »](#)

Background:

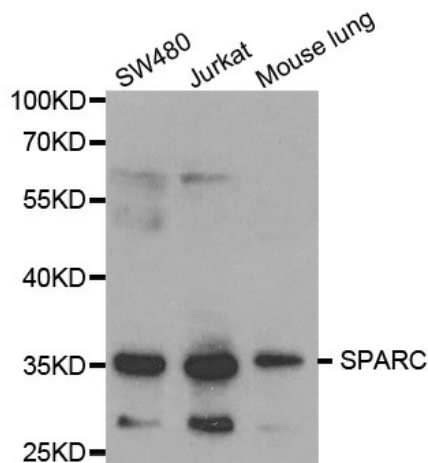
SPARC (secreted protein acidic and rich in cysteine), also known as osteonectin and BM40, is a secreted matricellular glycoprotein that belongs to a group of functionally related glycoproteins that includes tenascins C and X, thrombospondins 1 and 2, and osteopontin. Members in this class of glycoproteins are involved in tissue renewal, tissue remodeling, and embryonic development and work by exerting counter-adhesive and antiproliferative effects that lead to changes in cell shape, disruption of cell adhesion, and inhibition of the cell cycle. SPARC is expressed at high levels in bone tissue but is widely distributed in many other tissues and cell types, and is known to be associated with tissues undergoing morphogenesis, angiogenesis, mineralization, and other pathological responses to injury and tumorigenesis. SPARC has also been linked with obesity and diabetes.

Synonyms:

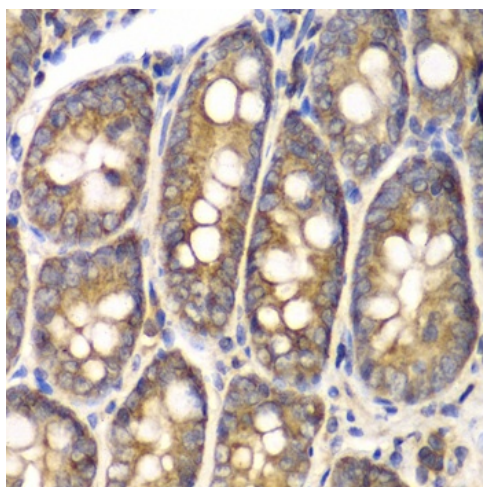
BM-40; OI17; ON

Protein Families:

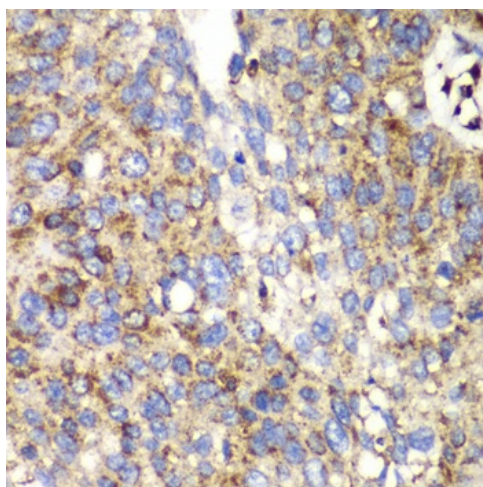
Druggable Genome

Product images:

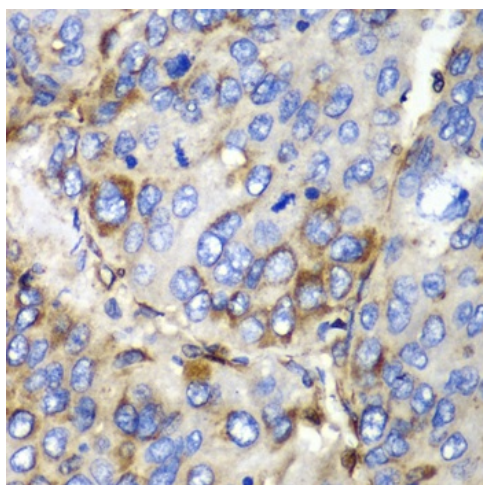
Western blot analysis of extracts of various cell lines, using SPARC antibody.



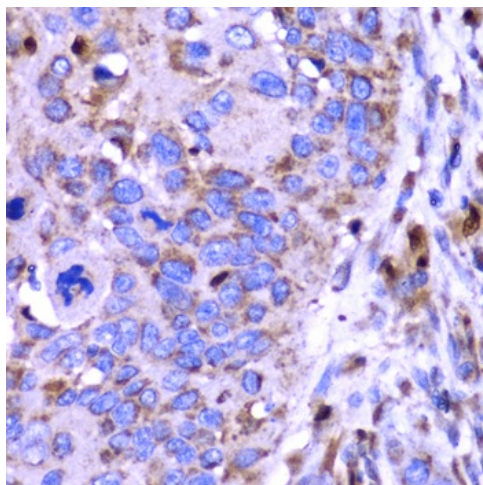
Immunohistochemistry of paraffin-embedded rat Intestine using SPARC antibody at dilution of 1:100 (400x lens).



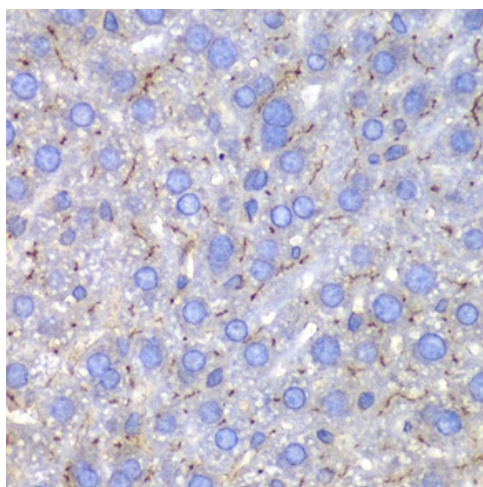
Immunohistochemistry of paraffin-embedded human lung cancer using SPARC antibody at dilution of 1:100 (400x lens).



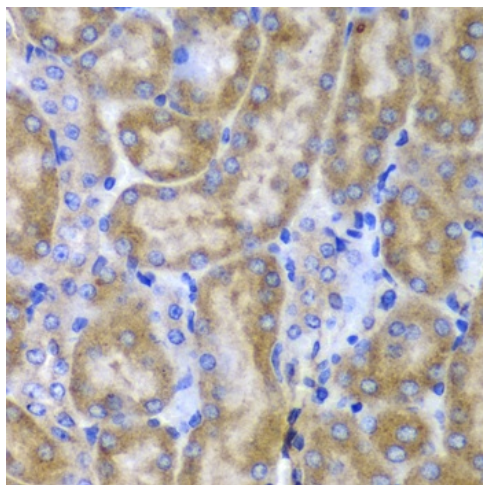
Immunohistochemistry of paraffin-embedded human liver cancer using SPARC antibody at dilution of 1:100 (400x lens).



Immunohistochemistry of paraffin-embedded human esophageal cancer using SPARC antibody at dilution of 1:100 (400x lens).



Immunohistochemistry of paraffin-embedded mouse liver using SPARC antibody at dilution of 1:100 (400x lens).



Immunohistochemistry of paraffin-embedded mouse kidney using SPARC antibody at dilution of 1:100 (400x lens).