

Product datasheet for **TA327101**

IL23 Receptor (IL23R) Rabbit Polyclonal Antibody

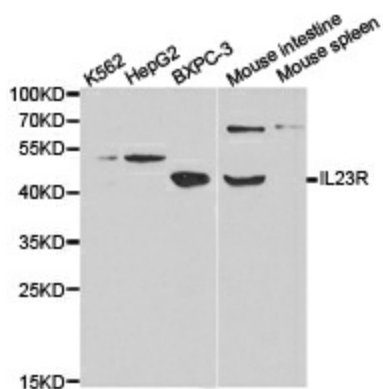
Product data:

Product Type:	Primary Antibodies
Applications:	ICC/IF, IHC, WB
Recommended Dilution:	WB 1:500 - 1:2000;IF 1:50- 1:200
Reactivity:	Human, Mouse, Rat
Host:	Rabbit
Isotype:	IgG
Clonality:	Polyclonal
Immunogen:	Recombinant protein of human IL23R
Formulation:	Store at -20C or -80C. Avoid freeze / thaw cycles. Buffer: PBS with 0.02% sodium azide, 50% glycerol, pH7.3
Concentration:	lot specific
Purification:	Affinity purification
Conjugation:	Unconjugated
Storage:	Store at -20°C as received.
Stability:	Stable for 12 months from date of receipt.
Gene Name:	interleukin 23 receptor
Database Link:	NP_653302 Entrez Gene 209590 Mouse Entrez Gene 689932 Rat Entrez Gene 149233 Human Q5VWK5
Background:	The protein encoded by this gene is a subunit of the receptor for IL23A/IL23. This protein pairs with the receptor molecule IL12RB1/IL12Rbeta1, and both are required for IL23A signaling. This protein associates constitutively with Janus kinase 2 (JAK2), and also binds to transcription activator STAT3 in a ligand-dependent manner. [provided by RefSeq, Jul 2008]
Synonyms:	interleukin 23 receptor; OTTHUMP00000010660
Protein Families:	Druggable Genome, Transmembrane
Protein Pathways:	Cytokine-cytokine receptor interaction, Jak-STAT signaling pathway

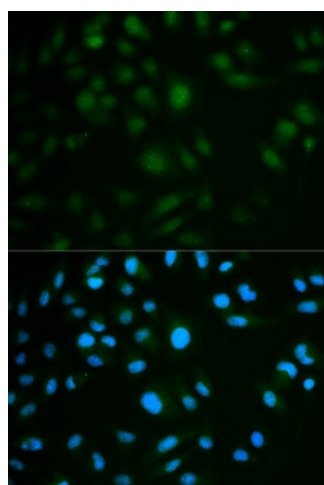


[View online »](#)

Product images:



Western blot analysis of extracts of various cell lines, using IL23R antibody.



Immunofluorescence analysis of MCF7 cell using IL23R antibody. Blue: DAPI for nuclear staining.