

## Product datasheet for **TA327099**

### TAP2 Rabbit Polyclonal Antibody

#### Product data:

Product Type:	Primary Antibodies
Applications:	ICC/IF, IHC, WB
Recommended Dilution:	WB 1:500 - 1:2000;IF 1:50- 1:200
Reactivity:	Human, Mouse, Rat
Host:	Rabbit
Isotype:	IgG
Clonality:	Polyclonal
Immunogen:	Recombinant protein of human TAP2
Formulation:	Store at -20C or -80C. Avoid freeze / thaw cycles. Buffer: PBS with 0.02% sodium azide, 50% glycerol, pH7.3
Concentration:	lot specific
Purification:	Affinity purification
Conjugation:	Unconjugated
Storage:	Store at -20°C as received.
Stability:	Stable for 12 months from date of receipt.
Gene Name:	transporter 2, ATP-binding cassette, sub-family B (MDR/TAP)
Database Link:	<a href="#">NP_061313</a> <a href="#">Entrez Gene 21355 Mouse</a> <a href="#">Entrez Gene 24812 Rat</a> <a href="#">Entrez Gene 6891 Human</a> <a href="#">Q03519</a>



[View online »](#)

**Background:**

The membrane-associated protein encoded by this gene is a member of the superfamily of ATP-binding cassette (ABC) transporters. ABC proteins transport various molecules across extra- and intra-cellular membranes. ABC genes are divided into seven distinct subfamilies (ABC1, MDR/TAP, MRP, ALD, OABP, GCN20, White). This protein is a member of the MDR/TAP subfamily. Members of the MDR/TAP subfamily are involved in multidrug resistance. This gene is located 7 kb telomeric to gene family member ABCB2. The protein encoded by this gene is involved in antigen presentation. This protein forms a heterodimer with ABCB2 in order to transport peptides from the cytoplasm to the endoplasmic reticulum. Mutations in this gene may be associated with ankylosing spondylitis, insulin-dependent diabetes mellitus, and celiac disease. Alternative splicing of this gene produces two products which differ in peptide selectivity and level of restoration of surface expression of MHC class I molecules. [provided by RefSeq, Jul 2008]

**Synonyms:**

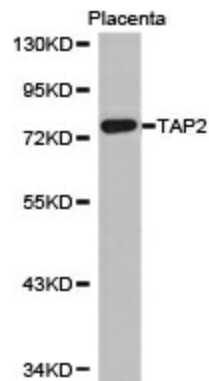
ABC18; ABCB3; APT2; D6S217E; PSF-2; PSF2; RING11

**Protein Families:**

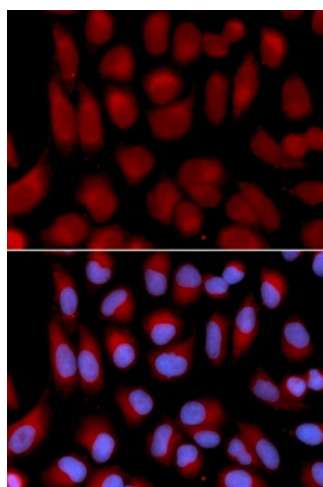
Druggable Genome, Transmembrane

**Protein Pathways:**

ABC transporters, Antigen processing and presentation, Primary immunodeficiency

**Product images:**

Western blot analysis of extracts of placenta cell lines, using TAP2 antibody.



Immunofluorescence analysis of U2OS cell using TAP2 antibody. Blue: DAPI for nuclear staining.