

## Product datasheet for **TA327098**

### ANP (NPPA) Rabbit Polyclonal Antibody

#### Product data:

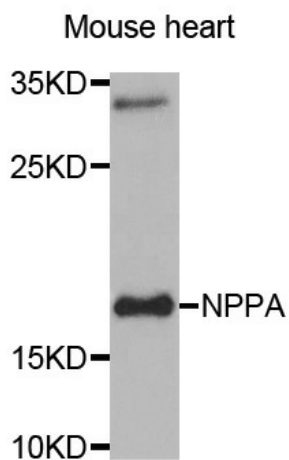
Product Type:	Primary Antibodies
Applications:	WB
Recommended Dilution:	WB 1:500 - 1:2000
Reactivity:	Human, Mouse, Rat
Host:	Rabbit
Isotype:	IgG
Clonality:	Polyclonal
Immunogen:	Recombinant protein of human NPPA
Formulation:	Store at -20C or -80C. Avoid freeze / thaw cycles. Buffer: PBS with 0.02% sodium azide, 50% glycerol, pH7.3
Concentration:	lot specific
Purification:	Affinity purification
Conjugation:	Unconjugated
Storage:	Store at -20°C as received.
Stability:	Stable for 12 months from date of receipt.
Predicted Protein Size:	17 kDa
Gene Name:	natriuretic peptide A
Database Link:	<a href="#">NP_006163</a> <a href="#">Entrez Gene 24602 RatEntrez Gene 230899 MouseEntrez Gene 4878 Human P01160</a>
Background:	The protein encoded by this gene belongs to the natriuretic peptide family. Natriuretic peptides are implicated in the control of extracellular fluid volume and electrolyte homeostasis. This protein is synthesized as a large precursor (containing a signal peptide), which is processed to release a peptide from the N-terminus with similarity to vasoactive peptide, cardiodilatin, and another peptide from the C-terminus with natriuretic-diuretic activity. Mutations in this gene have been associated with atrial fibrillation familial type 6.
Synonyms:	ANF; ANP; ATRFB6; ATRST2; CDD; CDD-ANF; CDP; PND



[View online »](#)

Protein Families: Secreted Protein, Transmembrane

**Product images:**



Western blot analysis of extracts of Mouse heart tissue, using NPPA antibody.