

Product datasheet for **TA327094S**

CHRM1 Rabbit Polyclonal Antibody

Product data:

Product Type:	Primary Antibodies
Applications:	ICC/IF, IHC, WB
Recommended Dilution:	WB: 1:500-1:2000
Reactivity:	Human, Mouse, Rat
Host:	Rabbit
Isotype:	IgG
Clonality:	Polyclonal
Immunogen:	Recombinant protein of human CHRM1
Formulation:	PBS with 0.05% proclin300,50% glycerol,pH7.3.
Concentration:	lot specific
Purification:	Affinity purification
Conjugation:	Unconjugated
Storage:	Store at -20°C as received.
Stability:	Stable for 12 months from date of receipt.
Gene Name:	cholinergic receptor muscarinic 1
Database Link:	NP_000729 Entrez Gene 12669 Mouse Entrez Gene 25229 Rat Entrez Gene 1128 Human P11229

Background: The muscarinic cholinergic receptors belong to a larger family of G protein-coupled receptors. The functional diversity of these receptors is defined by the binding of acetylcholine and includes cellular responses such as adenylate cyclase inhibition, phosphoinositide degeneration, and potassium channel mediation. Muscarinic receptors influence many effects of acetylcholine in the central and peripheral nervous system. The muscarinic cholinergic receptor 1 is involved in mediation of vagally-induced bronchoconstriction and in the acid secretion of the gastrointestinal tract. The gene encoding this receptor is localized to 11q13.

Synonyms: HM1; M1; M1R

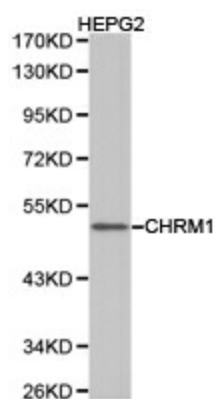
Protein Families: Druggable Genome, GPCR, Transmembrane



[View online »](#)

Protein Pathways: Calcium signaling pathway, Neuroactive ligand-receptor interaction, Regulation of actin cytoskeleton

Product images:



Western blot analysis of extracts of HepG2 cell lines, using CHRM1 antibody.