

## Product datasheet for **TA327090**

### Thyroid Hormone Receptor beta (THRB) Rabbit Polyclonal Antibody

#### Product data:

|                       |   |
|-----------------------|---|
| Product Type:         | Primary Antibodies  |
| Applications:         | WB  |
| Recommended Dilution: | WB: 1:500-1:2000  |
| Reactivity:           | Human, Mouse, Rat   |
| Host:                 | Rabbit  |
| Isotype:              | IgG   |
| Clonality:            | Polyclonal  |
| Immunogen:            | Recombinant protein of human THRB   |
| Formulation:          | Store at -20C or -80C. Avoid freeze / thaw cycles. Buffer: PBS with 0.02% sodium azide, 50% glycerol, pH7.3   |
| Concentration:        | lot specific  |
| Purification:         | Affinity purification   |
| Conjugation:          | Unconjugated  |
| Storage:              | Store at -20°C as received.   |
| Stability:            | Stable for 12 months from date of receipt.  |
| Gene Name:            | thyroid hormone receptor beta   |
| Database Link:        | <a href="#">NP_000452</a><br><a href="#">Entrez Gene 21834 Mouse</a> <a href="#">Entrez Gene 24831 Rat</a> <a href="#">Entrez Gene 7068 Human</a><br><a href="#">P10828</a> |

**Background:** The protein encoded by this gene is a nuclear hormone receptor for triiodothyronine. It is one of the several receptors for thyroid hormone, and has been shown to mediate the biological activities of thyroid hormone. Knockout studies in mice suggest that the different receptors, while having certain extent of redundancy, may mediate different functions of thyroid hormone. Mutations in this gene are known to be a cause of generalized thyroid hormone resistance (GTHR), a syndrome characterized by goiter and high levels of circulating thyroid hormone (T3-T4), with normal or slightly elevated thyroid stimulating hormone (TSH). Several alternatively spliced transcript variants encoding the same protein have been observed for this gene. [provided by RefSeq, Jul 2008]



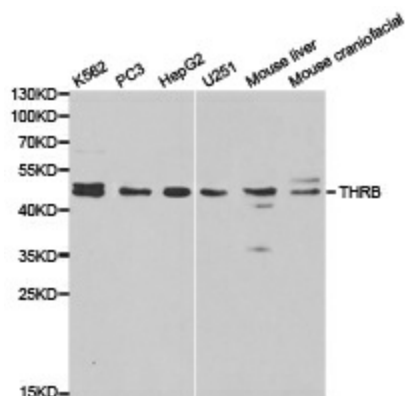
[View online »](#)

**Synonyms:** C-ERBA-2; C-ERBA-BETA; ERBA2; GRTH; NR1A2; PRTH; THR1; THRB1; THRB2

**Protein Families:** Druggable Genome, Nuclear Hormone Receptor, Transcription Factors

**Protein Pathways:** Neuroactive ligand-receptor interaction

### Product images:



Western blot analysis of extracts of various cell lines, using THRB antibody.