

## Product datasheet for **TA327084S**

### Antithrombin III (SERPINC1) Rabbit Polyclonal Antibody

#### Product data:

Product Type:	Primary Antibodies
Applications:	WB
Recommended Dilution:	WB 1:500 - 1:2000
Reactivity:	Mouse, Rat, Human
Host:	Rabbit
Isotype:	IgG
Clonality:	Polyclonal
Immunogen:	Recombinant protein of human SERPINC1
Formulation:	Store at -20C or -80C. Avoid freeze / thaw cycles. Buffer: PBS with 0.02% sodium azide, 50% glycerol, pH7.3
Concentration:	lot specific
Purification:	Affinity purification
Conjugation:	Unconjugated
Storage:	Store at -20°C as received.
Stability:	Stable for 12 months from date of receipt.
Gene Name:	serpin family C member 1
Database Link:	<a href="#">NP_000479</a> <a href="#">Entrez Gene 11905 Mouse</a> <a href="#">Entrez Gene 304917 Rat</a> <a href="#">Entrez Gene 462 Human</a> <a href="#">P01008</a>

**Background:** SERPINC1, also named Antithrombin III or Antithrombin, is a plasma protease inhibitor and a member of the serpin superfamily. This protein inhibits thrombin as well as other activated serine proteases of the coagulation system, and it regulates the blood coagulation cascade. The protein includes two functional domains: the heparin binding-domain at the N-terminus of the mature protein, and the reactive site domain at the C-terminus. The inhibitory activity is enhanced by the presence of heparin. More than 120 mutations have been identified for this gene, many of which are known to cause antithrombin-III deficiency.

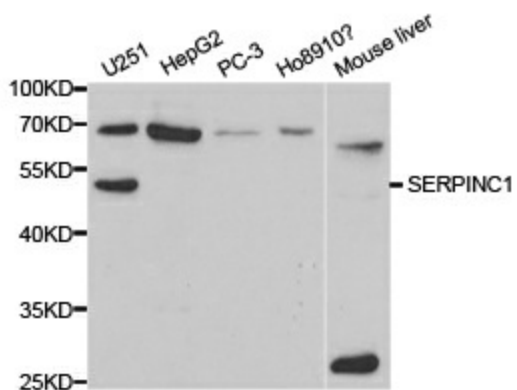
**Synonyms:** AT3; AT3D; ATIII; THPH7  
**Protein Families:** Druggable Genome, Secreted Protein



[View online »](#)

Protein Pathways: Complement and coagulation cascades

### Product images:



Western blot analysis of extracts of various cell lines, using SERPINC1 antibody.