

Product datasheet for **TA327083S**

alpha 2 Macroglobulin (A2M) Rabbit Polyclonal Antibody

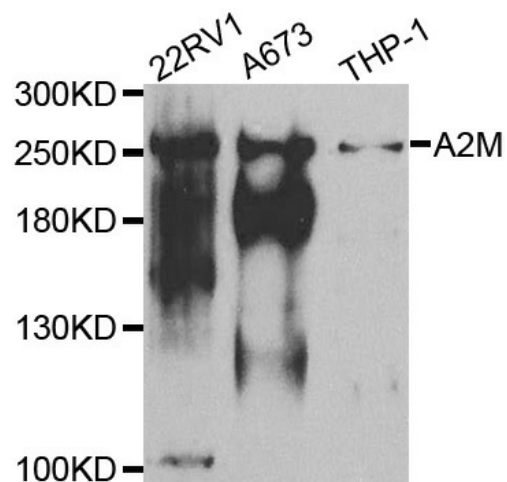
Product data:

Product Type:	Primary Antibodies
Applications:	WB
Recommended Dilution:	WB 1:500 - 1:2000
Reactivity:	Human, Mouse, Rat
Host:	Rabbit
Isotype:	IgG
Clonality:	Polyclonal
Immunogen:	A synthetic peptide of human A2M
Formulation:	PBS with 0.09% Sodium azide, 50% glycerol, pH 7.3.
Concentration:	lot specific
Purification:	Affinity purification
Conjugation:	Unconjugated
Storage:	Store at -20°C as received.
Stability:	Stable for 12 months from date of receipt.
Predicted Protein Size:	163 kDa
Gene Name:	alpha-2-macroglobulin
Database Link:	NP_000005 Entrez Gene 24153 Rat Entrez Gene 2 Human P01023
Background:	Alpha-2-macroglobulin is a protease inhibitor and cytokine transporter. It inhibits many proteases, including trypsin, thrombin and collagenase. A2M is implicated in Alzheimer disease (AD) due to its ability to mediate the clearance and degradation of A-beta, the major component of beta-amyloid deposits. [provided by RefSeq, Jul 2008]
Synonyms:	A2MD; CPAMD5; FWP007; S863-7
Protein Families:	Druggable Genome, Secreted Protein
Protein Pathways:	Complement and coagulation cascades



[View online »](#)

Product images:



Western blot analysis of extracts of various cell lines, using A2M antibody.