

## Product datasheet for **TA327077**

### CD147 (BSG) Rabbit Polyclonal Antibody

#### Product data:

Product Type:	Primary Antibodies
Applications:	IHC, IP, WB
Recommended Dilution:	WB 1:500 - 1:2000;IP 1:20 - 1:50
Reactivity:	Human, Mouse, Rat
Host:	Rabbit
Isotype:	IgG
Clonality:	Polyclonal
Immunogen:	Recombinant protein of human BSG
Formulation:	Store at -20C or -80C. Avoid freeze / thaw cycles. Buffer: PBS with 0.02% sodium azide, 50% glycerol, pH7.3
Concentration:	lot specific
Purification:	Affinity purification
Conjugation:	Unconjugated
Storage:	Store at -20°C as received.
Stability:	Stable for 12 months from date of receipt.
Predicted Protein Size:	42 kDa
Gene Name:	basigin (Ok blood group)
Database Link:	<a href="#">NP_001719</a> <a href="#">Entrez Gene 12215 Mouse</a> <a href="#">Entrez Gene 25246 Rat</a> <a href="#">Entrez Gene 682 Human</a> <a href="#">P35613</a>



[View online »](#)

**Background:**

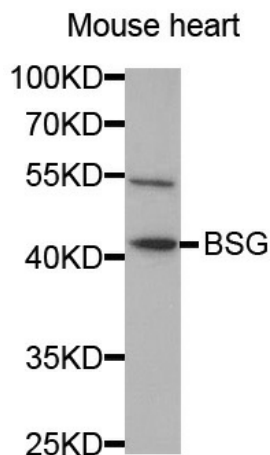
Basigin (EMMPRIN, CD147) is a type I integral membrane receptor protein belonging to the immunoglobulin superfamily. Basigin is a glycosylated protein with four known isoforms, of which isoform 2 is the most abundantly expressed. Multiple functions have been ascribed to Basigin; foremost among these is stimulating the secretion of extracellular matrix metalloproteinases by adjacent fibroblasts, a function which has been implicated in promoting tumor progression. Research studies have shown that Basigin is overexpressed by many tumor cells, and its expression level may correlate with tumor malignancy. A recent study identified the BASIGIN gene as a regulatory target of Slug, suggesting a role for Basigin in the process of epithelial-mesenchymal transition. Basigin has also been identified as a marker for a subset of highly suppressive regulatory T cells, and as an obligate receptor for the malarial parasite *Plasmodium falciparum* on human erythrocytes.

**Synonyms:**

5F7; CD147; EMMPRIN; OK; TCSF

**Protein Families:**

Druggable Genome, ES Cell Differentiation/IPS, Transmembrane

**Product images:**

Western blot analysis of extracts of mouse heart cell lines, using BSG antibody.