

Product datasheet for **TA327075**

beta 2 Microglobulin (B2M) Rabbit Polyclonal Antibody

Product data:

Product Type:	Primary Antibodies
Applications:	IHC, WB
Recommended Dilution:	WB 1:500 - 1:2000
Reactivity:	Human, Mouse, Rat
Host:	Rabbit
Isotype:	IgG
Clonality:	Polyclonal
Immunogen:	Recombinant protein of human B2M
Formulation:	Store at -20C or -80C. Avoid freeze / thaw cycles. Buffer: PBS with 0.02% sodium azide, 50% glycerol, pH7.3
Concentration:	lot specific
Purification:	Affinity purification
Conjugation:	Unconjugated
Storage:	Store at -20°C as received.
Stability:	Stable for 12 months from date of receipt.
Gene Name:	beta-2-microglobulin
Database Link:	NP_004039 Entrez Gene 12010 Mouse Entrez Gene 24223 Rat Entrez Gene 567 Human P61769



[View online »](#)

Background:

β 2-microglobulin (B2M) is a principal component of the Major Histocompatibility Complex (MHC) class I molecule, a ternary membrane protein complex that displays fragments derived from proteolyzed cytosolic proteins on the surface of cells for recognition by the surveillance immune system. As an integral component of the MHC class I complex, β 2-microglobulin plays a critically important role in immune system function. It has important relevance to cancer biology research; for example, research studies have shown that nearly one-third of diffuse large B cell lymphomas contain mutations that inactivate β 2-microglobulin gene function, thereby allowing tumor cells to escape immune detection. In addition, β 2-microglobulin has been identified as an amyloid preprotein with collagen-binding affinity; its accumulation in osteoarthritic lesions of long-term dialysis patients is reportedly a contributing factor to the condition known as amyloid osteoarthropathy.

Synonyms:

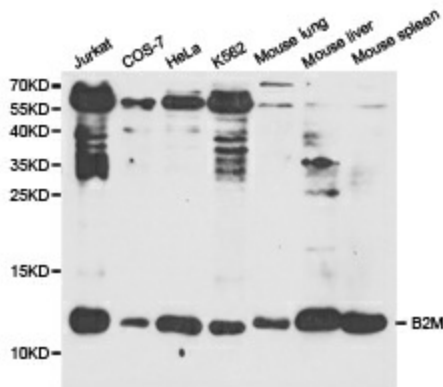
IMD43

Protein Families:

Druggable Genome, Secreted Protein

Protein Pathways:

Antigen processing and presentation

Product images:

Western blot analysis of extracts of various cell lines, using B2M antibody.