

Product datasheet for **TA327074S**

PAH Rabbit Polyclonal Antibody

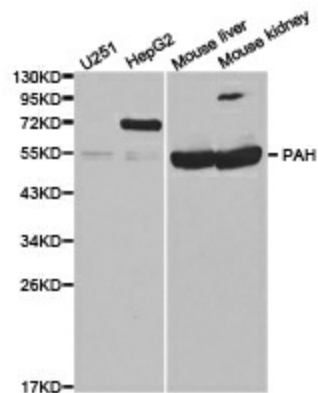
Product data:

Product Type:	Primary Antibodies
Applications:	ICC/IF, WB
Recommended Dilution:	WB 1:500 - 1:2000
Reactivity:	Human, Mouse, Rat
Host:	Rabbit
Isotype:	IgG
Clonality:	Polyclonal
Immunogen:	Recombinant protein of human PAH
Formulation:	Store at -20C or -80C. Avoid freeze / thaw cycles. Buffer: PBS with 0.02% sodium azide, 50% glycerol, pH7.3
Concentration:	lot specific
Purification:	Affinity purification
Conjugation:	Unconjugated
Storage:	Store at -20°C as received.
Stability:	Stable for 12 months from date of receipt.
Gene Name:	phenylalanine hydroxylase
Database Link:	NP_000268 Entrez Gene 18478 Mouse Entrez Gene 24616 Rat Entrez Gene 5053 Human P00439
Background:	PAH encodes the enzyme phenylalanine hydroxylase that is the rate-limiting step in phenylalanine catabolism. Deficiency of this enzyme activity results in the autosomal recessive disorder phenylketonuria.
Synonyms:	PH; PKU; PKU1
Protein Families:	Druggable Genome
Protein Pathways:	Metabolic pathways, Phenylalanine, tyrosine and tryptophan biosynthesis, Phenylalanine metabolism



[View online »](#)

Product images:



Western blot analysis of extracts of various cell lines, using PAH antibody.