

## Product datasheet for **TA327066**

### UCP3 Rabbit Polyclonal Antibody

#### Product data:

Product Type:	Primary Antibodies
Applications:	WB
Recommended Dilution:	WB 1:500 - 1:2000
Reactivity:	Human, Mouse
Host:	Rabbit
Isotype:	IgG
Clonality:	Polyclonal
Immunogen:	Recombinant protein of human UCP3
Formulation:	Store at -20C or -80C. Avoid freeze / thaw cycles. Buffer: PBS with 0.02% sodium azide, 50% glycerol, pH7.3
Concentration:	lot specific
Purification:	Affinity purification
Conjugation:	Unconjugated
Storage:	Store at -20°C as received.
Stability:	Stable for 12 months from date of receipt.
Gene Name:	uncoupling protein 3
Database Link:	<a href="#">NP_003347</a> <a href="#">Entrez Gene 22229 Mouse</a> <a href="#">Entrez Gene 7352 Human</a> <a href="#">P55916</a>



[View online »](#)

**Background:**

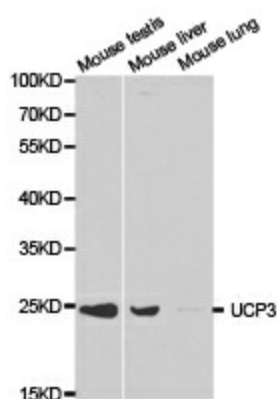
The uncoupling protein UCP1 (formerly designated UCP) is an integral membrane protein unique to brown adipose tissue mitochondria. UCP1 forms a dimer that acts as a proton channel, which can uncouple oxidative phosphorylation by dissipating the electrochemical potential across the inner mitochondrial membrane. This process induces heat production in brown adipose tissue and is involved in regulation of body temperature and glucose metabolism. UCP2 is a structurally related protein that also uncouples mitochondrial respiration. It is more widely expressed in human and mouse tissues, including white adipose tissue and muscle, than is UCP1. UCP2 is thought to play a role in body weight regulation. An additional UCP family member, UCP3, is highly muscle specific and is possibly involved in the uncoupling of oxidative phosphorylation in skeletal muscle.

**Synonyms:**

SLC25A9

**Protein Families:**

Druggable Genome

**Product images:**

Western blot analysis of extracts of skeletal muscle cell and SGC-7901 cell line, using UCP3 antibody.