

Product datasheet for **TA327065S**

Caspase-7 (CASP7) Rabbit Polyclonal Antibody

Product data:

Product Type:	Primary Antibodies
Applications:	ICC/IF, IHC, WB
Recommended Dilution:	WB 1:500 - 1:2000;IF 1:50 - 1:200
Reactivity:	Human, Mouse, Rat
Host:	Rabbit
Isotype:	IgG
Clonality:	Polyclonal
Immunogen:	Recombinant protein of human CASP7
Formulation:	Store at -20C or -80C. Avoid freeze / thaw cycles. Buffer: PBS with 0.02% sodium azide, 50% glycerol, pH7.3
Concentration:	lot specific
Purification:	Affinity purification
Conjugation:	Unconjugated
Storage:	Store at -20°C as received.
Stability:	Stable for 12 months from date of receipt.
Predicted Protein Size:	34 kDa
Gene Name:	caspase 7
Database Link:	NP_001218 Entrez Gene 12369 MouseEntrez Gene 64026 RatEntrez Gene 840 Human P55210
Background:	Caspase-7 (CMH-1, Mch3, ICE-LAP3) has been identified as a major contributor to the execution of apoptosis . Caspase-7, like caspase-3, is an effector caspase that is responsible for cleaving downstream substrates such as (ADP-ribose) polymerase and PARP . During apoptosis, caspase-7 is activated through proteolytic processing by upstream caspases at Asp23, Asp198, and Asp206 to produce the mature subunits . Similar to caspases-2 and -3, caspase-7 preferentially cleaves substrates following the recognition sequence DEVD .
Synonyms:	CASP-7; CMH-1; ICE-LAP3; LICE2; MCH3

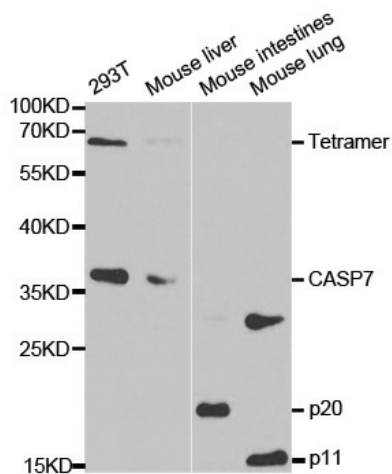


[View online »](#)

Protein Families: Druggable Genome, Protease

Protein Pathways: Alzheimer's disease, Apoptosis

Product images:



Western blot analysis of extracts of various cell lines, using CASP7 antibody.