

Product datasheet for **TA327065**

Caspase-7 (CASP7) Rabbit Polyclonal Antibody

Product data:

| | |
|-------------------------|---|
| Product Type: | Primary Antibodies |
| Applications: | ICC/IF, IHC, WB |
| Recommended Dilution: | WB 1:500 - 1:2000;IF 1:50 - 1:200 |
| Reactivity: | Human, Mouse, Rat |
| Host: | Rabbit |
| Isotype: | IgG |
| Clonality: | Polyclonal |
| Immunogen: | Recombinant protein of human CASP7 |
| Formulation: | Store at -20C or -80C. Avoid freeze / thaw cycles. Buffer: PBS with 0.02% sodium azide, 50% glycerol, pH7.3 |
| Concentration: | lot specific |
| Purification: | Affinity purification |
| Conjugation: | Unconjugated |
| Storage: | Store at -20°C as received. |
| Stability: | Stable for 12 months from date of receipt. |
| Predicted Protein Size: | 34 kDa |
| Gene Name: | caspase 7 |
| Database Link: | NP_001218 Entrez Gene 12369 Mouse Entrez Gene 64026 Rat Entrez Gene 840 Human P55210 |
| Background: | Caspase-7 (CMH-1, Mch3, ICE-LAP3) has been identified as a major contributor to the execution of apoptosis . Caspase-7, like caspase-3, is an effector caspase that is responsible for cleaving downstream substrates such as (ADP-ribose) polymerase and PARP . During apoptosis, caspase-7 is activated through proteolytic processing by upstream caspases at Asp23, Asp198, and Asp206 to produce the mature subunits . Similar to caspases-2 and -3, caspase-7 preferentially cleaves substrates following the recognition sequence DEVD . |
| Synonyms: | CASP-7; CMH-1; ICE-LAP3; LICE2; MCH3 |

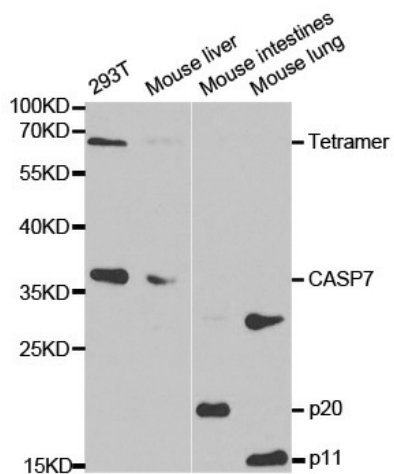


[View online »](#)

Protein Families: Druggable Genome, Protease

Protein Pathways: Alzheimer's disease, Apoptosis

Product images:



Western blot analysis of extracts of various cell lines, using CASP7 antibody.