

## Product datasheet for **TA327064**

### UPF1 Rabbit Polyclonal Antibody

#### Product data:

Product Type:	Primary Antibodies
Applications:	ICC/IF, IP, WB
Recommended Dilution:	WB 1:500 - 1:2000;IF 1:50- 1:200
Reactivity:	Human, Mouse, Rat
Host:	Rabbit
Isotype:	IgG
Clonality:	Polyclonal
Immunogen:	A synthetic peptide of human UPF1
Formulation:	Store at -20C or -80C. Avoid freeze / thaw cycles. Buffer: PBS with 0.02% sodium azide, 50% glycerol, pH7.3
Concentration:	lot specific
Purification:	Affinity purification
Conjugation:	Unconjugated
Storage:	Store at -20°C as received.
Stability:	Stable for 12 months from date of receipt.
Gene Name:	UPF1, RNA helicase and ATPase
Database Link:	<a href="#">NP_002902</a> <a href="#">Entrez Gene 19704 Mouse</a> <a href="#">Entrez Gene 684558 Rat</a> <a href="#">Entrez Gene 5976 Human</a> <a href="#">Q92900</a>

**Background:** Upf1 was identified as an active component in nonsense-mediated decay (NMD), an mRNA surveillance mechanism in eukaryotic cells that degrades mRNAs containing premature termination codons. Upf1 was found to be an ATP-dependent RNA helicase in the cytoplasm and was later shown to be a component of cytoplasmic P-bodies. Upf1 phosphorylation mediates the repression of translation that accompanies NMD, allowing mRNA accessibility to the NMD machinery. Two other active components of NMD, Upf2 and Upf3, were also identified and described as having perinuclear and nucleocytoplasmic localization, respectively.

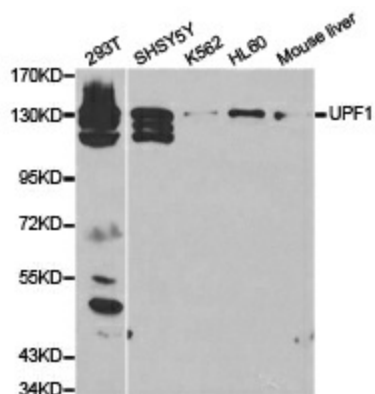
**Synonyms:** HUPF1; NORF1; pNORF1; RENT1; smg-2



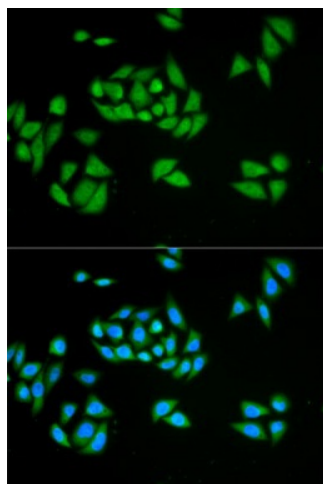
[View online »](#)

Protein Families: Druggable Genome

### Product images:



Western blot analysis of extracts of various cell lines, using UPF1 antibody.



Immunofluorescence analysis of HeLa cell using UPF1 antibody. Blue: DAPI for nuclear staining.