

## Product datasheet for **TA327063**

### PRMT5 Rabbit Polyclonal Antibody

#### Product data:

Product Type:	Primary Antibodies
Applications:	ICC/IF, IHC, WB
Recommended Dilution:	WB 1:500 - 1:2000;IF 1:50 - 1:200
Reactivity:	Human, Mouse, Rat
Host:	Rabbit
Isotype:	IgG
Clonality:	Polyclonal
Immunogen:	A synthetic peptide of human PRMT5
Formulation:	Store at -20C or -80C. Avoid freeze / thaw cycles. Buffer: PBS with 0.02% sodium azide, 50% glycerol, pH7.3
Concentration:	lot specific
Purification:	Affinity purification
Conjugation:	Unconjugated
Storage:	Store at -20°C as received.
Stability:	Stable for 12 months from date of receipt.
Predicted Protein Size:	73 kDa
Gene Name:	protein arginine methyltransferase 5
Database Link:	<a href="#">NP_006100</a> <a href="#">Entrez Gene 27374 Mouse</a> <a href="#">Entrez Gene 364382 Rat</a> <a href="#">Entrez Gene 10419 Human</a> <a href="#">Q14744</a>



[View online »](#)

**Background:**

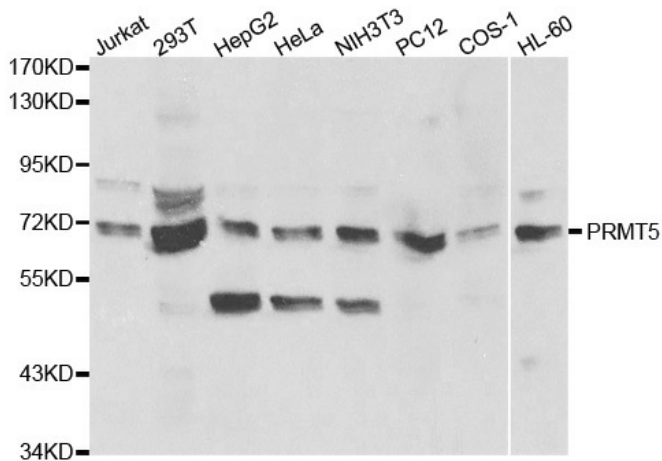
Human Skb1Hs methyltransferase (also called JBP1), a homologue of yeast protein Skb1 and Hsl7p, is composed of 637 amino acid residues and contains motifs conserved among protein methyltransferases. It methylates histones and MBP in vitro. Yeast Hsl7p is involved in regulation of cell cycle progression through G2 by negatively regulating Swe1p, a protein tyrosine kinase that phosphorylates and inhibits Cdc28p. An Hsl7p homologue, Skb1, was identified in fission yeast by virtue of its yeast two-hybrid interaction with Shk1p, a p21 (cdc42p/Rac) activated kinase (PAK). Both proteins belong to the protein methyltransferase superfamily. Interestingly, human Skb1Hs methyltransferase was shown to interact with Jak kinases. This suggests the possibility that the Skb1Hs methyltransferase could link Jak to a PAK signaling pathway in mammalian cells.

**Synonyms:**

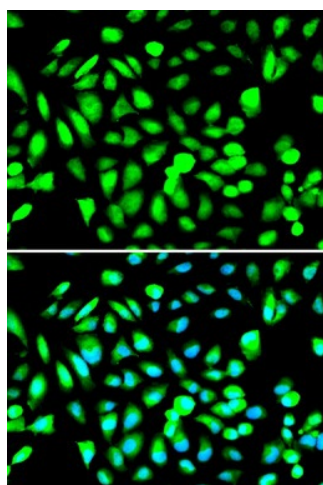
HRMT1L5; IBP72; JBP1; SKB1; SKB1Hs

**Protein Families:**

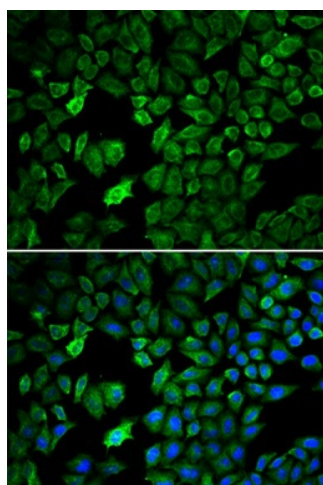
Stem cell - Pluripotency

**Product images:**

Western blot analysis of extracts of various cell lines, using PRMT5 antibody.



Immunofluorescence analysis of A549 cell using PRMT5 antibody. Blue: DAPI for nuclear staining.



Immunofluorescence analysis of U2OS cell using PRMT5 antibody. Blue: DAPI for nuclear staining.