

Product datasheet for **TA327062S**

PICK1 Rabbit Polyclonal Antibody

Product data:

Product Type:	Primary Antibodies
Applications:	WB
Recommended Dilution:	WB 1:500 - 1:2000
Reactivity:	Human
Host:	Rabbit
Isotype:	IgG
Clonality:	Polyclonal
Immunogen:	A synthetic peptide of human PICK1
Formulation:	Store at -20C or -80C. Avoid freeze / thaw cycles. Buffer: PBS with 0.02% sodium azide, 50% glycerol, pH7.3
Concentration:	lot specific
Purification:	Affinity purification
Conjugation:	Unconjugated
Storage:	Store at -20°C as received.
Stability:	Stable for 12 months from date of receipt.
Gene Name:	protein interacting with PRKCA 1
Database Link:	NP_036539 Entrez Gene 9463 Human Q9NRD5

Background: Protein interacting with C kinase 1 (PICK1) is a PDZ-domain containing protein that is located in the perinuclear region and is phosphorylated in response to PKC α activation. PKC α , which is essential for the regulation of proliferation and differentiation in numerous cell types, contains within its catalytic region a PDZ-binding domain that is absent from other PKC isoforms. Mutation of the PICK1 PDZ domain inhibits the binding of PICK1 to PKC α . PICK1 also interacts with the carboxy terminus of α -amino-3-hydroxy-5-methyl-isoxazole-4-propionic acid (AMPA) receptor, a neurotransmitter receptor located at excitatory synapses, suggesting that PICK1 plays a role in the modulation of synaptic transmission by targeting and anchoring AMPA to specific synapses.

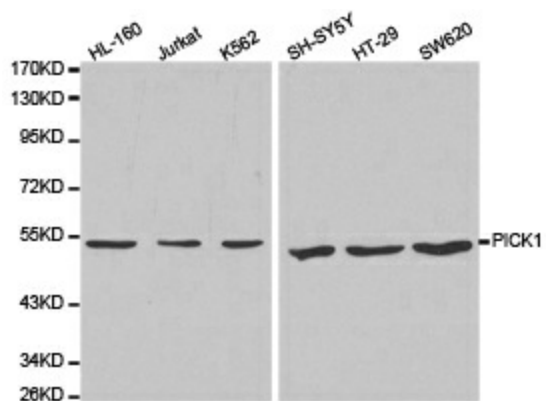


[View online »](#)

Synonyms: PICK; PRKCABP

Protein Families: Druggable Genome

Product images:



Western blot analysis of extracts of various cell lines, using PICK1 antibody.