

Product datasheet for **TA327060S**

IGF2BP1 Rabbit Polyclonal Antibody

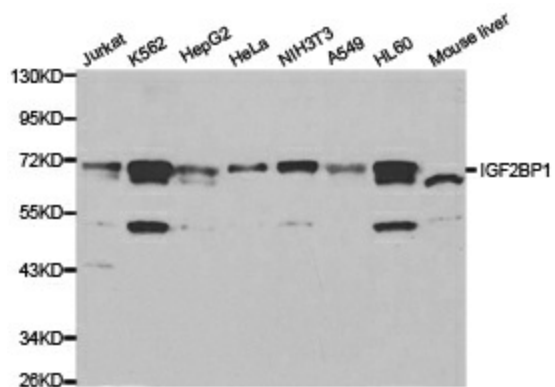
Product data:

Product Type:	Primary Antibodies
Applications:	ICC/IF, IHC, WB
Recommended Dilution:	WB 1:500 - 1:2000
Reactivity:	Human, Mouse, Rat
Host:	Rabbit
Isotype:	IgG
Clonality:	Polyclonal
Immunogen:	A synthetic peptide of human IGF2BP1
Formulation:	Store at -20C or -80C. Avoid freeze / thaw cycles. Buffer: PBS with 0.02% sodium azide, 50% glycerol, pH7.3
Concentration:	lot specific
Purification:	Affinity purification
Conjugation:	Unconjugated
Storage:	Store at -20°C as received.
Stability:	Stable for 12 months from date of receipt.
Gene Name:	insulin like growth factor 2 mRNA binding protein 1
Database Link:	NP_006537 Entrez Gene 140486 Mouse Entrez Gene 303477 Rat Entrez Gene 10642 Human Q9NZI8
Background:	Insulin-like growth factor-II mRNA-binding proteins (IMPs) belong to a family of zipcode-binding proteins. Three members of this family, IMP1, IMP2, and IMP3, have been identified. They contain two RNA recognition motifs, four K homology domains, and were found to function in mRNA localization, turnover, and translation control. Research studies have implicated these proteins in a variety of physiological and pathological processes, such as growth and development, testicular neoplasia, and melanocytic neoplasia.
Synonyms:	CRD-BP; CRDBP; IMP-1; IMP1; VICKZ1; ZBP1



[View online »](#)

Product images:



Western blot analysis of extracts of various cell lines, using IGF2BP1 antibody.